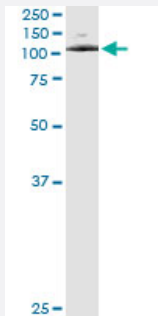


ATP2C1 (Human) IP-WB Antibody Pair

Catalog # H00027032-PW1

Size 1 Set

Applications



Immunoprecipitation of ATP2C1 transfected lysate using mouse monoclonal anti-ATP2C1 and Protein A Magnetic Bead ([U0007](#)), and immunoblotted with rabbit polyclonal anti-ATP2C1.

Specification

Product Description	This IP-WB antibody pair set comes with one antibody for immunoprecipitation and another to detect the precipitated protein in western blot.
Reactivity	Human
Quality Control Testing	Immunoprecipitation-Western Blot (IP-WB) Immunoprecipitation of ATP2C1 transfected lysate using mouse monoclonal anti-ATP2C1 and Protein A Magnetic Bead (U0007), and immunoblotted with rabbit polyclonal anti-ATP2C1.
Supplied Product	Antibody pair set content: 1. Antibody pair for IP: mouse monoclonal anti-ATP2C1 (300 ug) 2. Antibody pair for WB: rabbit polyclonal anti-ATP2C1 (50 ul)
Storage Instruction	Store reagents of the antibody pair set at -20°C or lower. Please aliquot to avoid repeated freeze thaw cycle. Reagents should be returned to -20°C storage immediately after use.

Applications

- Immunoprecipitation-Western Blot

[Protocol Download](#)

Gene Info — ATP2C1

Entrez GeneID [27032](#)**Gene Name** ATP2C1**Gene Alias** ATP2C1A, BCPM, HHD, KIAA1347, PMR1, SPCA1, hSPCA1**Gene Description** ATPase, Ca⁺⁺ transporting, type 2C, member 1**Omim ID** [169600 604384](#)**Gene Ontology** [Hyperlink](#)

Gene Summary The protein encoded by this gene belongs to the family of P-type cation transport ATPases. This magnesium-dependent enzyme catalyzes the hydrolysis of ATP coupled with the transport of the calcium. Defects in this gene cause Hailey-Hailey disease, an autosomal dominant disorder. Alternatively spliced transcript variants encoding different isoforms have been identified. [provided by RefSeq]

Other Designations ATP-dependent Ca(2+) pump|ATPase 2C1|ATPase, Ca(2+)-sequestering|HUSSY-28|calcium-transporting ATPase 2C1|secretory pathway Ca2+/Mn2+ ATPase