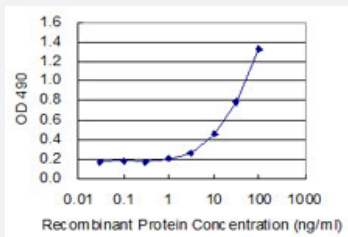


DNAI1 (Human) Matched Antibody Pair

Catalog # H00027019-AP22

Size 1 Set

Applications



Sandwich ELISA detection sensitivity ranging from 1 ng/ml to 100 ng/ml.

Specification

Product Description	This antibody pair set comes with a matched antibody pair to detect and quantify the protein level of human DNAI1.
Reactivity	Human
Interspecies Antigen Sequence	Mouse (87); Rat (85)
Quality Control Testing	Standard curve using recombinant protein (H00027019-P01) as an analyte. Sandwich ELISA detection sensitivity ranging from 1 ng/ml to 100 ng/ml.
Supplied Product	Antibody pair set content: 1. Capture antibody: rabbit MaxPab® affinity purified polyclonal anti-DNAI1 (100 ug) 2. Detection antibody: mouse purified polyclonal anti-DNAI1 (20 ug) *Reagents are sufficient for at least 1-2 x 96 well plates using recommended protocols.
Storage Instruction	Store reagents of the antibody pair set at -20°C or lower. Please aliquot to avoid repeated freeze thaw cycle. Reagents should be returned to -20°C storage immediately after use.

Applications

- ELISA Pair (Recombinant protein)

[Protocol Download](#)

Gene Info — DNAI1

Entrez GeneID [27019](#)

Gene Name DNAI1

Gene Alias CILD1, ICS, ICS1, MGC26204, PCD

Gene Description dynein, axonemal, intermediate chain 1

Omim ID [242650](#) [244400](#) [604366](#)

Gene Ontology [Hyperlink](#)

Gene Summary The inner- and outer-arm dyneins, which bridge between the doublet microtubules in axonemes, are the force-generating proteins responsible for the sliding movement in axonemes. The intermediate and light chains, thought to form the base of the dynein arm, help mediate attachment and may also participate in regulating dynein activity. This gene encodes an intermediate chain dynein, belonging to the large family of motor proteins. Mutations in this gene result in abnormal ciliary ultrastructure and function associated with primary ciliary dyskinesia (PCD) and Kartagener syndrome. [provided by RefSeq]

Other Designations OTTHUMP00000021280|dynein intermediate chain DNAI1|dynein, axonemal, intermediate polypeptide 1|immotile cilia syndrome 1

Disease

- [Asthenozoospermia](#)
- [Tobacco Use Disorder](#)