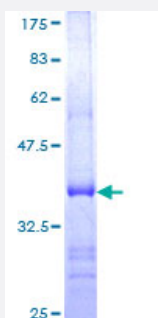


USP21 (Human) Recombinant Protein (Q01)

Catalog # H00027005-Q01

Size 25 ug, 10 ug

Applications



Specification

Product Description	Human USP21 partial ORF (NP_036607, 466 a.a. - 565 a.a.) recombinant protein with GST-tag at N-terminal.
Sequence	FSASRGSIKKSSVGVDPLQLRLSLGDFASDKAGSPVYQLYALCNHSGSVHYGHYALCQCQTGW HVYNDSRVSPVSENQVASSEGYVLFYQLMQEPPRCL
Host	Wheat Germ (in vitro)
Theoretical MW (kDa)	36.74
Interspecies Antigen Sequence	Mouse (96); Rat (96)
Preparation Method	in vitro wheat germ expression system
Purification	Glutathione Sepharose 4 Fast Flow
Quality Control Testing	12.5% SDS-PAGE Stained with Coomassie Blue.
Storage Buffer	50 mM Tris-HCl, 10 mM reduced Glutathione, pH=8.0 in the elution buffer.
Storage Instruction	Store at -80°C. Aliquot to avoid repeated freezing and thawing.
Note	Best use within three months from the date of receipt of this protein.

Applications

- Enzyme-linked Immunoabsorbent Assay
- Western Blot (Recombinant protein)
- Antibody Production
- Protein Array

Gene Info — USP21

Entrez GeneID [27005](#)

GeneBank Accession# [NM_012475](#)

Protein Accession# [NP_036607](#)

Gene Name USP21

Gene Alias MGC3394, USP16, USP23

Gene Description ubiquitin specific peptidase 21

Omim ID [604729](#)

Gene Ontology [Hyperlink](#)

Gene Summary This gene encodes a member of the C19 peptidase family, also known as family 2 of ubiquitin carboxy-terminal hydrolases. The encoded protein cleaves ubiquitin from ubiquitinated proteins for recycling in intracellular protein degradation. The encoded protein is also able to release NEDD8, a ubiquitin-like protein, from NEDD8-conjugated proteins. This gene has been referred to as USP16 and USP23 but is now known as USP21. Alternatively spliced transcript variants have been described. [provided by RefSeq]

Other Designations NEDD8-specific protease|deubiquitinating enzyme 21|ubiquitin carboxyl-terminal hydrolase 21|ubiquitin specific protease 21|ubiquitin thioesterase 21|ubiquitin-specific processing protease 21|ubiquitin-specific protease 16|ubiquitin-specific protease 21