

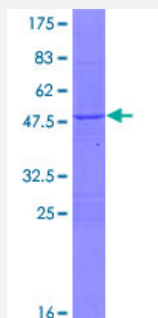
Full-Length

## ZRF1 (Human) Recombinant Protein (P01)

Catalog # H00027000-P01

Size 25 ug, 10 ug

### Applications



### Specification

Product Description	Human ZRF1 full-length ORF ( AAH56682.1, 1 a.a. - 167 a.a.) recombinant protein with GST-tag at N-terminal.
Sequence	MLLLPSAADGRGTAITHALTSASTLCQVEPVGRWFEAFVKRRNRNASASFQELEDKKELSEESE DEELQLEEFPMCLKTDPKDWKNQDHYAVLGLGHVRYKATQRQIKAAHKAMVLKHHDPDKRKAAG EPIKEGDNDYFTCTKKGSPGDSYQKLILQLIHLMKCYLIQ
Host	Wheat Germ (in vitro)
Theoretical MW (kDa)	45.4
Interspecies Antigen Sequence	Mouse (95); Rat (95)
Preparation Method	<a href="#">in vitro wheat germ expression system</a>
Purification	Glutathione Sepharose 4 Fast Flow
Quality Control Testing	12.5% SDS-PAGE Stained with Coomassie Blue.
Storage Buffer	50 mM Tris-HCl, 10 mM reduced Glutathione, pH=8.0 in the elution buffer.
Storage Instruction	Store at -80°C. Aliquot to avoid repeated freezing and thawing.

## Note

Best use within three months from the date of receipt of this protein.

## Applications

- Enzyme-linked Immunoabsorbent Assay
- Western Blot (Recombinant protein)
- Antibody Production
- Protein Array

## Gene Info — DNAJC2

Entrez GeneID [27000](#)

GeneBank Accession# [BC056682.1](#)

Protein Accession# [AAH56682.1](#)

Gene Name DNAJC2

Gene Alias MPHOSPH11, MPP11, ZRF1, ZUO1

Gene Description DnaJ (Hsp40) homolog, subfamily C, member 2

Omim ID [605502](#)

Gene Ontology [Hyperlink](#)

**Gene Summary** This gene is a member of the M-phase phosphoprotein (MPP) family. The gene encodes a phosphoprotein with a J domain and a Myb DNA-binding domain which localizes to both the nucleus and the cytosol. The protein is capable of forming a heterodimeric complex that associates with ribosomes, acting as a molecular chaperone for nascent polypeptide chains as they exit the ribosome. This protein was identified as a leukemia-associated antigen and expression of the gene is upregulated in leukemic blasts. Also, chromosomal aberrations involving this gene are associated with primary head and neck squamous cell tumors. This gene has a pseudogene on chromosome 6. Alternatively spliced variants which encode different protein isoforms have been described. [provided by RefSeq]

**Other Designations** M-phase phosphoprotein 11|zotin related factor 1