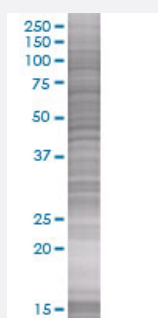


SEC22L2 293T Cell Transient Overexpression Lysate(Denatured)

Catalog # H00026984-T01

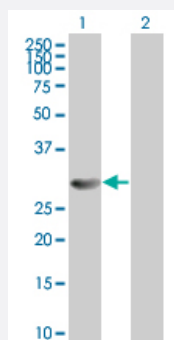
Size 100 uL

Applications



SDS-PAGE Gel

SEC22L2 transfected lysate



Western Blot

Lane 1: SEC22L2 transfected lysate (33.88 KDa).

Lane 2: Non-transfected lysate.

Specification

Transfected Cell Line 293T

Plasmid pCMV-SEC22L2 full-length

Host Human

Theoretical MW (kDa) 33.88

Quality Control Testing Transient overexpression cell lysate was tested with Anti-SEC22L2 antibody ([H00026984-B01](#)) by Western Blots.
 SDS-PAGE Gel
 SEC22L2 transfected lysate
 Western Blot
 Lane 1: SEC22L2 transfected lysate (33.88 KDa).
 Lane 2: Non-transfected lysate.

Storage Buffer

1X Sample Buffer (50 mM Tris-HCl, 2% SDS, 10% glycerol, 300 mM 2-mercaptoethanol, 0.01% Bromophenol blue)

Storage Instruction

Store at -80°C. Aliquot to avoid repeated freezing and thawing.

Applications

- Western Blot

Gene Info — SEC22A

Entrez GeneID

[26984](#)

GeneBank Accession#

[BC007122](#)

Protein Accession#

[AAH07122](#)

Gene Name

SEC22A

Gene Alias

SEC22L2

Gene Description

SEC22 vesicle trafficking protein homolog A (S. cerevisiae)

Gene Ontology

[Hyperlink](#)

Gene Summary

The protein encoded by this gene belongs to the member of the SEC22 family of vesicle trafficking proteins. This protein has similarity to rat SEC22 and may act in the early stages of the secretory pathway. [provided by RefSeq]

Other Designations

SEC22 vesicle trafficking protein homolog A|SEC22 vesicle trafficking protein-like 2|sec22 homolog

Disease

- [Tobacco Use Disorder](#)