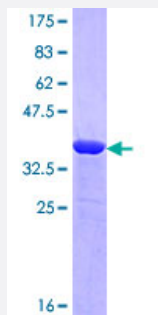


NBEA (Human) Recombinant Protein (Q01)

Catalog # H00026960-Q01

Size 25 ug, 10 ug

Applications



Specification

Product Description	Human NBEA partial ORF (NP_056493.3, 1133 a.a. - 1220 a.a.) recombinant protein with GST-tag at N-terminal.
Sequence	ADEKEDLPNSSTSFLFDKIPKQEEKLLPELSSNHIPNIQDTQVHLGVSDDLGLLAHMTGSVDLTCT SSIIEEKEFKIHTTSDGMSSI
Host	Wheat Germ (in vitro)
Theoretical MW (kDa)	35.42
Interspecies Antigen Sequence	Mouse (88)
Preparation Method	in vitro wheat germ expression system
Purification	Glutathione Sepharose 4 Fast Flow
Quality Control Testing	12.5% SDS-PAGE Stained with Coomassie Blue.
Storage Buffer	50 mM Tris-HCl, 10 mM reduced Glutathione, pH=8.0 in the elution buffer.
Storage Instruction	Store at -80°C. Aliquot to avoid repeated freezing and thawing.
Note	Best use within three months from the date of receipt of this protein.

Applications

- Enzyme-linked Immunoabsorbent Assay
- Western Blot (Recombinant protein)
- Antibody Production
- Protein Array

Gene Info — NBEA

Entrez GeneID [26960](#)

GeneBank Accession# [NM_015678](#)

Protein Accession# [NP_056493.3](#)

Gene Name NBEA

Gene Alias BCL8B, LYST2

Gene Description neurobeachin

Omim ID [604889](#)

Gene Ontology [Hyperlink](#)

Gene Summary This gene encodes a member of a large, diverse group of A-kinase anchor proteins that target the activity of protein kinase A to specific subcellular sites by binding to its type II regulatory subunits. Brain-specific expression and coat protein-like membrane recruitment of a highly similar protein in mouse suggest an involvement in neuronal post-Golgi membrane traffic. Mutations in this gene may be associated with a form of autism. Alternatively spliced transcript variants may exist, but their full-length nature has not been determined. [provided by RefSeq]

Other Designations lysosomal trafficking regulator 2

Disease

- [Cardiovascular Diseases](#)
- [Diabetes Mellitus](#)
- [Edema](#)

- [Genetic Predisposition to Disease](#)
- [Mental Disorders](#)