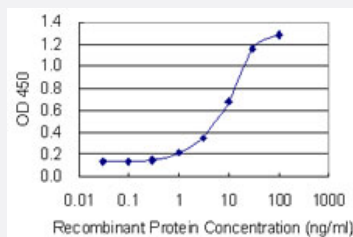


# NBEA monoclonal antibody (M01), clone 3F11

Catalog # H00026960-M01

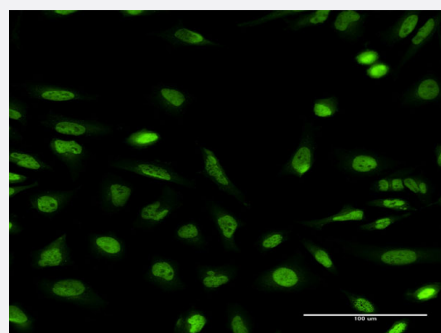
Size 100 ug

## Applications



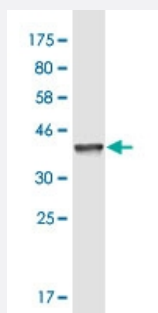
### Sandwich ELISA (Recombinant protein)

Detection limit for recombinant GST tagged NBEA is 0.3 ng/ml as a capture antibody.



### Immunofluorescence

Immunofluorescence of monoclonal antibody to NBEA on HeLa cell . [antibody concentration 10 ug/ml]



Western Blot detection against Immunogen (35.42 KDa) .

## Specification

### Product Description

Mouse monoclonal antibody raised against a partial recombinant NBEA.

<b>Immunogen</b>	NBEA (NP_056493.3, 1133 a.a. ~ 1220 a.a) partial recombinant protein with GST tag. MW of the GST tag alone is 26 KDa.
<b>Sequence</b>	ADEKEDLPNSSTSFLFDKIPKQEEKLLPELSSNHIPNIQDTQVHLGVSDDLGLLAHMTGSVDLTCTSSIIIEEKEFKIHTTSDGMSSI
<b>Host</b>	Mouse
<b>Reactivity</b>	Human
<b>Interspecies Antigen Sequence</b>	Mouse (88)
<b>Isotype</b>	IgG2a Kappa
<b>Quality Control Testing</b>	Antibody Reactive Against Recombinant Protein. Western Blot detection against Immunogen (35.42 KDa) .
<b>Storage Buffer</b>	In 1x PBS, pH 7.4
<b>Storage Instruction</b>	Store at -20°C or lower. Aliquot to avoid repeated freezing and thawing.

## Applications

- Western Blot (Recombinant protein)

[Protocol Download](#)

- Sandwich ELISA (Recombinant protein)

Detection limit for recombinant GST tagged NBEA is 0.3 ng/ml as a capture antibody.

[Protocol Download](#)

- ELISA

- Immunofluorescence

Immunofluorescence of monoclonal antibody to NBEA on HeLa cell . [antibody concentration 10 ug/ml]

## Gene Info — NBEA

<b>Entrez GeneID</b>	<a href="#">26960</a>
<b>GeneBank Accession#</b>	<a href="#">NM_015678</a>

Protein Accession#	<a href="#">NP_056493.3</a>
Gene Name	NBEA
Gene Alias	BCL8B, LYST2
Gene Description	neurobeachin
Omim ID	<a href="#">604889</a>
Gene Ontology	<a href="#">Hyperlink</a>
Gene Summary	<p>This gene encodes a member of a large, diverse group of A-kinase anchor proteins that target the activity of protein kinase A to specific subcellular sites by binding to its type II regulatory subunits. Brain-specific expression and coat protein-like membrane recruitment of a highly similar protein in mouse suggest an involvement in neuronal post-Golgi membrane traffic. Mutations in this gene may be associated with a form of autism. Alternatively spliced transcript variants may exist, but their full-length nature has not been determined. [provided by RefSeq]</p>
Other Designations	lysosomal trafficking regulator 2

## Disease

- [Cardiovascular Diseases](#)
- [Diabetes Mellitus](#)
- [Edema](#)
- [Genetic Predisposition to Disease](#)
- [Mental Disorders](#)