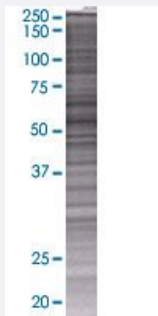


# ELP4 293T Cell Transient Overexpression Lysate(Denatured)

Catalog # H00026610-T01

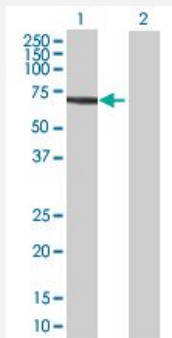
Size 100 uL

## Applications



### SDS-PAGE Gel

ELP4 transfected lysate.



### Western Blot

Lane 1: ELP4 transfected lysate ( 58.96 KDa)

Lane 2: Non-transfected lysate.

## Specification

Transfected Cell Line	293T
Plasmid	pCMV-ELP4 full-length
Host	Human
Theoretical MW (kDa)	58.96
Interspecies Antigen Sequence	Mouse (77)

**Quality Control Testing**

Transient overexpression cell lysate was tested with Anti-ELP4 antibody ([H00026610-B01](#)) by Western Blots.  
SDS-PAGE Gel  
ELP4 transfected lysate.  
Western Blot  
Lane 1: ELP4 transfected lysate ( 58.96 KDa)  
Lane 2: Non-transfected lysate.

**Storage Buffer**

1X Sample Buffer (50 mM Tris-HCl, 2% SDS, 10% glycerol, 300 mM 2-mercaptoethanol, 0.01% Bromophenol blue)

**Storage Instruction**

Store at -80°C. Aliquot to avoid repeated freezing and thawing.

## Applications

- Western Blot

## Gene Info — ELP4

**Entrez GeneID**[26610](#)**GeneBank Accession#**[BC012514.1](#)**Protein Accession#**[AAH12514.1](#)**Gene Name**

ELP4

**Gene Alias**

C11orf19, FLJ20498, PAX6NEB, PAXNEB, dJ68P15A.1

**Gene Description**

elongation protein 4 homolog (S. cerevisiae)

**Omim ID**[606985](#)**Gene Ontology**[Hyperlink](#)**Gene Summary**

This gene encodes a component of the six subunit elongator complex, a histone acetyltransferase complex that associates directly with RNA polymerase II during transcriptional elongation. The human gene can partially complement sensitivity phenotypes of yeast ELP4 deletion mutants. Alternatively spliced variants that encode different protein isoforms have been described but the full-length nature of only one has been determined. [provided by RefSeq]

**Other Designations**

PAX6 neighbor|elongation protein 4 homolog