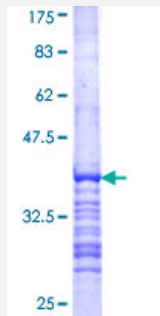


ELP4 (Human) Recombinant Protein (Q01)

Catalog # H00026610-Q01

Size 25 ug, 10 ug

Applications



Specification

Product Description	Human ELP4 partial ORF (NP_061913, 101 a.a. - 199 a.a.) recombinant protein with GST-tag at N-terminal.
Sequence	YFLAEGIVNGHTLLVASAKEDPANILQELPAPLLDDKCKKEFDEDVYNHKTPE\$NIKMKIAWRYQLL PKMEIGPVSSSRFGHYDASKRMPQELIEASN
Host	Wheat Germ (in vitro)
Theoretical MW (kDa)	36.63
Interspecies Antigen Sequence	Mouse (77)
Preparation Method	in vitro wheat germ expression system
Purification	Glutathione Sepharose 4 Fast Flow
Quality Control Testing	12.5% SDS-PAGE Stained with Coomassie Blue.
Storage Buffer	50 mM Tris-HCl, 10 mM reduced Glutathione, pH=8.0 in the elution buffer.
Storage Instruction	Store at -80°C. Aliquot to avoid repeated freezing and thawing.
Note	Best use within three months from the date of receipt of this protein.

Applications

- Enzyme-linked Immunoabsorbent Assay
- Western Blot (Recombinant protein)
- Antibody Production
- Protein Array

Gene Info — ELP4

Entrez GeneID [26610](#)

GeneBank Accession# [NM_019040](#)

Protein Accession# [NP_061913](#)

Gene Name ELP4

Gene Alias C11orf19, FLJ20498, PAX6NEB, PAXNEB, dJ68P15A.1

Gene Description elongation protein 4 homolog (S. cerevisiae)

Omim ID [606985](#)

Gene Ontology [Hyperlink](#)

Gene Summary This gene encodes a component of the six subunit elongator complex, a histone acetyltransferase complex that associates directly with RNA polymerase II during transcriptional elongation. The human gene can partially complement sensitivity phenotypes of yeast ELP4 deletion mutants. Alternatively spliced variants that encode different protein isoforms have been described but the full-length nature of only one has been determined. [provided by RefSeq]

Other Designations PAX6 neighbor|elongation protein 4 homolog