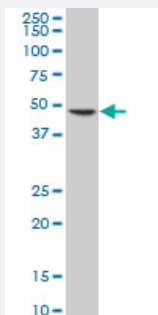


ELP4 polyclonal antibody (A01)

Catalog # H00026610-A01

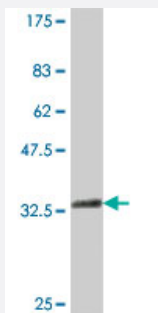
Size 50 uL

Applications



Western Blot (Cell lysate)

ELP4 polyclonal antibody (A01), Lot # 060623JCS1 Western Blot analysis of ELP4 expression in Y-79 (Cat # L042V1).



Western Blot detection against Immunogen (37 kDa) .

Specification

Product Description	Mouse polyclonal antibody raised against a partial recombinant ELP4.
Immunogen	ELP4 (NP_061913, 101 a.a. ~ 199 a.a) partial recombinant protein with GST tag.
Sequence	YFLAEGIVNGHTLLVASAKEDPANILQELPAPLLDDKCKKEFDEDVYNHKTPESNIKM KIAWRYQLL PKMEIGPVSSSRFGHYDASKRMPQEIEASN
Host	Mouse
Reactivity	Human
Interspecies Antigen Sequence	Mouse (77)

Quality Control Testing

Antibody Reactive Against Recombinant Protein.
Western Blot detection against Immunogen (37 KDa) .

Storage Buffer

50 % glycerol

Storage Instruction

Store at -20°C or lower. Aliquot to avoid repeated freezing and thawing.

Applications

- Western Blot (Cell lysate)

ELP4 polyclonal antibody (A01), Lot # 060623JCS1 Western Blot analysis of ELP4 expression in Y-79 (Cat # L042V1).

[Protocol Download](#)

- Western Blot (Recombinant protein)

[Protocol Download](#)

- ELISA

Gene Info — ELP4

Entrez GeneID

[26610](#)

GeneBank Accession#

[NM_019040](#)

Protein Accession#

[NP_061913](#)

Gene Name

ELP4

Gene Alias

C11orf19, FLJ20498, PAX6NEB, PAXNEB, dJ68P15A.1

Gene Description

elongation protein 4 homolog (S. cerevisiae)

Omim ID

[606985](#)

Gene Ontology

[Hyperlink](#)

Gene Summary

This gene encodes a component of the six subunit elongator complex, a histone acetyltransferase complex that associates directly with RNA polymerase II during transcriptional elongation. The human gene can partially complement sensitivity phenotypes of yeast ELP4 deletion mutants. Alternatively spliced variants that encode different protein isoforms have been described but the full-length nature of only one has been determined. [provided by RefSeq]

Other Designations

PAX6 neighbor|elongation protein 4 homolog