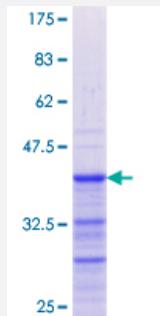


GREM1 (Human) Recombinant Protein (Q02)

Catalog # H00026585-Q02

Size 25 ug, 10 ug

Applications



Specification

Product Description	Human GREM1 partial ORF (NP_037504.1, 25 a.a. - 124 a.a.) recombinant protein with GST-tag at N-terminal.
Sequence	KKKGSQGAIPPPDKAQHNDSEQTQSPQQPGSRNRGRGQGGRGTAMPGEEVLESSQEALHVTER KYLKRDWCKTQPLKQTIHEEGCNSRTIINRFCYGCNS
Host	Wheat Germ (in vitro)
Theoretical MW (kDa)	36.63
Interspecies Antigen Sequence	Mouse (97); Rat (98)
Preparation Method	in vitro wheat germ expression system
Purification	Glutathione Sepharose 4 Fast Flow
Quality Control Testing	12.5% SDS-PAGE Stained with Coomassie Blue.
Storage Buffer	50 mM Tris-HCl, 10 mM reduced Glutathione, pH=8.0 in the elution buffer.
Storage Instruction	Store at -80°C. Aliquot to avoid repeated freezing and thawing.
Note	Best use within three months from the date of receipt of this protein.

Applications

- Enzyme-linked Immunoabsorbent Assay
- Western Blot (Recombinant protein)
- Antibody Production
- Protein Array

Gene Info — GREM1

Entrez GeneID [26585](#)

GeneBank Accession# [NM_013372](#)

Protein Accession# [NP_037504.1](#)

Gene Name GREM1

Gene Alias CKTSF1B1, DAND2, DRM, GREMLIN, IHG-2, MGC126660, PIG2

Gene Description gremlin 1, cysteine knot superfamily, homolog (Xenopus laevis)

Omim ID [603054](#)

Gene Ontology [Hyperlink](#)

Gene Summary This gene encodes a member of the BMP (bone morphogenic protein) antagonist family. Like BMPs, BMP antagonists contain cystine knots and typically form homo- and heterodimers. The CAN (cerberus and dan) subfamily of BMP antagonists, to which this gene belongs, is characterized by a C-terminal cystine knot with an eight-membered ring. The antagonistic effect of the secreted glycosylated protein encoded by this gene is likely due to its direct binding to BMP proteins. As an antagonist of BMP, this gene may play a role in regulating organogenesis, body patterning, and tissue differentiation. In mouse, this protein has been shown to relay the sonic hedgehog (SHH) signal from the polarizing region to the apical ectodermal ridge during limb bud outgrowth. [provided by RefSeq]

Other Designations cysteine knot superfamily 1, BMP antagonist 1|down-regulated in Mos-transformed cells|gremlin 1-like protein|gremlin-1|increased in high glucose-2|proliferation-inducing gene 2

Disease

- [Breast cancer](#)
- [Breast Neoplasms](#)
- [Colorectal Neoplasms](#)
- [Diabetic Nephropathies](#)
- [Genetic Predisposition to Disease](#)