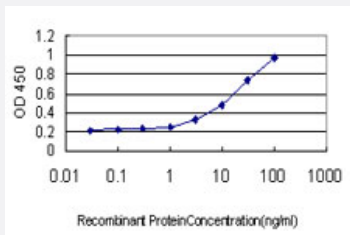


GREM1 monoclonal antibody (M07), clone 2D1

Catalog # H00026585-M07

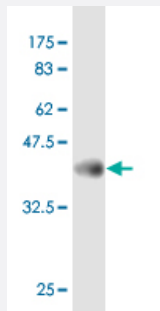
Size 100 ug

Applications



Sandwich ELISA (Recombinant protein)

Detection limit for recombinant GST tagged GREM1 is approximately 1ng/ml as a capture antibody.



Western Blot detection against Immunogen (37.84 KDa) .

Specification

Product Description	Mouse monoclonal antibody raised against a partial recombinant GREM1.
Immunogen	GREM1 (NP_037504, 75 a.a. ~ 184 a.a) partial recombinant protein with GST tag. MW of the GST tag alone is 26 KDa.
Sequence	ESSQEALHVTERKYLKRDWCKTQPLKQTIHEEGCNSRTIINRFCYGQCNSFYIPRHIRKEEGSFQSCSFCKPKKFTTMMVTLNCPQLQPPTKKKRVTRVKQCRCISIDLD
Host	Mouse
Reactivity	Human

Interspecies Antigen Sequence	Mouse (97); Rat (98)
Isotype	IgG2a Kappa
Quality Control Testing	Antibody Reactive Against Recombinant Protein. Western Blot detection against Immunogen (37.84 KDa) .
Storage Buffer	In 1x PBS, pH 7.4
Storage Instruction	Store at -20°C or lower. Aliquot to avoid repeated freezing and thawing.

Applications

- Western Blot (Recombinant protein)

[Protocol Download](#)

- Sandwich ELISA (Recombinant protein)

Detection limit for recombinant GST tagged GREM1 is approximately 1ng/ml as a capture antibody.

[Protocol Download](#)

- ELISA

Gene Info — GREM1

Entrez GeneID	26585
GeneBank Accession#	NM_013372
Protein Accession#	NP_037504
Gene Name	GREM1
Gene Alias	CKTSF1B1, DAND2, DRM, GREMLIN, IHG-2, MGC126660, PIG2
Gene Description	gremlin 1, cysteine knot superfamily, homolog (Xenopus laevis)
Omim ID	603054
Gene Ontology	Hyperlink

Gene Summary

This gene encodes a member of the BMP (bone morphogenic protein) antagonist family. Like BMPs, BMP antagonists contain cystine knots and typically form homo- and heterodimers. The CAN (cerberus and dan) subfamily of BMP antagonists, to which this gene belongs, is characterized by a C-terminal cystine knot with an eight-membered ring. The antagonistic effect of the secreted glycosylated protein encoded by this gene is likely due to its direct binding to BMP proteins. As an antagonist of BMP, this gene may play a role in regulating organogenesis, body patterning, and tissue differentiation. In mouse, this protein has been shown to relay the sonic hedgehog (SHH) signal from the polarizing region to the apical ectodermal ridge during limb bud outgrowth. [provided by RefSeq]

Other Designations

cysteine knot superfamily 1, BMP antagonist 1|down-regulated in Mos-transformed cells|gremlin 1-like protein|gremlin-1|increased in high glucose-2|proliferation-inducing gene 2

Publication Reference

- [Elevated levels of gremlin-1 in eutopic endometrium and peripheral serum in patients with endometriosis.](#)

Sha G, Zhang Y, Zhang C, Wan Y, Zhao Z, Li C, Lang J.

Fertility and Sterility 2008 Mar; 91(2):350.

Application: IF, ELISA, WB, Human, Human endometriotic and nonendometriotic eutopic endometria, serum samples from women with endometriosis and from healthy control women

Disease

- [Breast cancer](#)
- [Breast Neoplasms](#)
- [Colorectal Neoplasms](#)
- [Diabetic Nephropathies](#)
- [Genetic Predisposition to Disease](#)