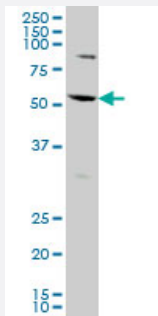


AATF monoclonal antibody (M09), clone 2H6

Catalog # H00026574-M09

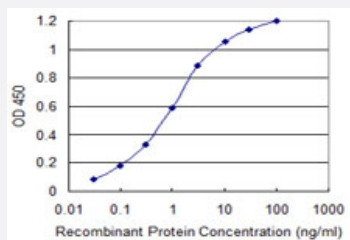
Size 100 ug

Applications



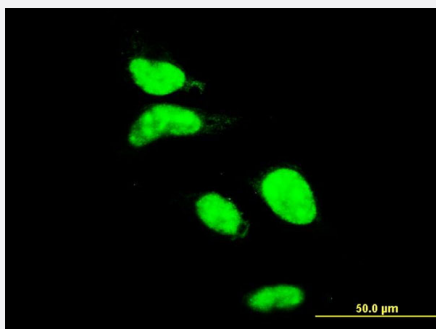
Western Blot (Cell lysate)

AATF monoclonal antibody (M09), clone 2H6 Western Blot analysis of AATF expression in HeLa (Cat # L013V1).



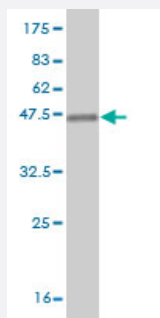
Sandwich ELISA (Recombinant protein)

Detection limit for recombinant GST tagged AATF is 0.03 ng/ml as a capture antibody.



Immunofluorescence

Immunofluorescence of monoclonal antibody to AATF on HeLa cell. [antibody concentration 10 ug/ml]



Western Blot detection against Immunogen (36.63 KDa) .

Specification

Product Description	Mouse monoclonal antibody raised against a partial recombinant AATF.
Immunogen	AATF (AAH00591, 151 a.a. ~ 250 a.a) partial recombinant protein with GST tag. MW of the GST tag alone is 26 KDa.
Sequence	VQSISDFEKFTKGMDLGSSEEEDEESGMEEGDDAEDSQGESEEDRAGDRNSEDDGVVMTF SSVKVSEEEVEKGRAVKNQIALWDQLLEGRIKLQKALLT
Host	Mouse
Reactivity	Human
Interspecies Antigen Sequence	Mouse (78); Rat (79)
Isotype	IgG1 Kappa
Quality Control Testing	Antibody Reactive Against Recombinant Protein. Western Blot detection against Immunogen (36.63 KDa) .
Storage Buffer	In 1x PBS, pH 7.4
Storage Instruction	Store at -20°C or lower. Aliquot to avoid repeated freezing and thawing.

Applications

- Western Blot (Cell lysate)

AATF monoclonal antibody (M09), clone 2H6 Western Blot analysis of AATF expression in HeLa (Cat # L013V1).

[Protocol Download](#)

- Western Blot (Recombinant protein)

[Protocol Download](#)

- Sandwich ELISA (Recombinant protein)

Detection limit for recombinant GST tagged AATF is 0.03 ng/ml as a capture antibody.

[Protocol Download](#)

- ELISA

- Immunofluorescence

Immunofluorescence of monoclonal antibody to AATF on HeLa cell. [antibody concentration 10 ug/ml]

Gene Info — AATF

Entrez GeneID [26574](#)

GeneBank Accession# [BC000591](#)

Protein Accession# [AAH00591](#)

Gene Name AATF

Gene Alias CHE-1, CHE1, DED

Gene Description apoptosis antagonizing transcription factor

Omim ID [608463](#)

Gene Ontology [Hyperlink](#)

Gene Summary The protein encoded by this gene was identified on the basis of its interaction with MAP3K12/DLK, a protein kinase known to be involved in the induction of cell apoptosis. This gene product contains a leucine zipper, which is a characteristic motif of transcription factors, and was shown to exhibit strong transactivation activity when fused to Gal4 DNA binding domain. Overexpression of this gene interfered with MAP3K12 induced apoptosis. [provided by RefSeq]

Other Designations -

Disease

- [Breast Neoplasms](#)

- [Genetic Predisposition to Disease](#)
- [Obesity](#)