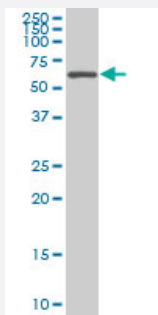


# AATF monoclonal antibody (M04), clone 3C7

Catalog # H00026574-M04

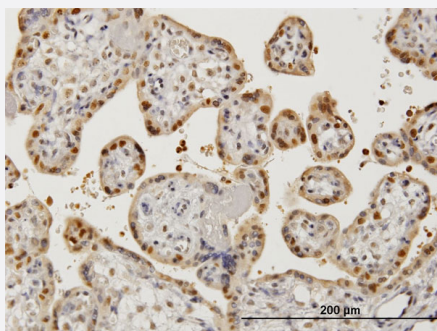
Size 100 ug

## Applications



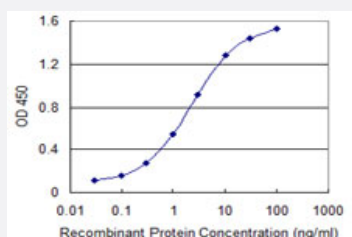
### Western Blot (Cell lysate)

AATF monoclonal antibody (M04), clone 3C7 Western Blot analysis of AATF expression in HeLa S3 NE ( Cat # L013V3 ).



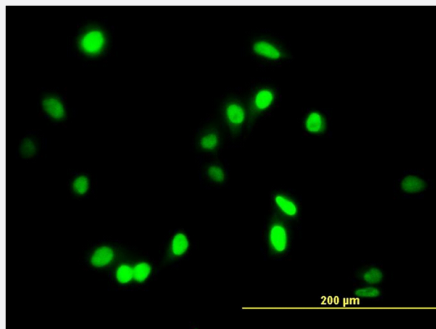
### Immunohistochemistry (Formalin/PFA-fixed paraffin-embedded sections)

Immunoperoxidase of monoclonal antibody to AATF on formalin-fixed paraffin-embedded human placenta. [antibody concentration 3 ug/ml]



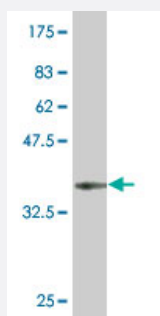
### Sandwich ELISA (Recombinant protein)

Detection limit for recombinant GST tagged AATF is 0.03 ng/ml as a capture antibody.



## Immunofluorescence

Immunofluorescence of monoclonal antibody to AATF on HeLa cell. [antibody concentration 10 ug/ml]



Western Blot detection against Immunogen (36.63 KDa) .

## Specification

<b>Product Description</b>	Mouse monoclonal antibody raised against a partial recombinant AATF.
<b>Immunogen</b>	AATF (AAH00591, 151 a.a. ~ 250 a.a) partial recombinant protein with GST tag. MW of the GST tag alone is 26 KDa.
<b>Sequence</b>	VQSISDFEKFTKGMDLGSSEEEDEESGMEEGDDAEDSQGESEEDRAGDRNSEDDGVVMTF SSVKVSEEEVEKGRAVKNQIALWDQLLEGRIKLQKALLT
<b>Host</b>	Mouse
<b>Reactivity</b>	Human
<b>Interspecies Antigen Sequence</b>	Mouse (78); Rat (79)
<b>Isotype</b>	IgG1 Kappa
<b>Quality Control Testing</b>	Antibody Reactive Against Recombinant Protein. Western Blot detection against Immunogen (36.63 KDa) .
<b>Storage Buffer</b>	In 1x PBS, pH 7.4
<b>Storage Instruction</b>	Store at -20°C or lower. Aliquot to avoid repeated freezing and thawing.

## Applications

- Western Blot (Cell lysate)

AATF monoclonal antibody (M04), clone 3C7 Western Blot analysis of AATF expression in Hela S3 NE ( Cat # L013V3 ).

[Protocol Download](#)

- Western Blot (Recombinant protein)

[Protocol Download](#)

- Immunohistochemistry (Formalin/PFA-fixed paraffin-embedded sections)

Immunoperoxidase of monoclonal antibody to AATF on formalin-fixed paraffin-embedded human placenta. [antibody concentration 3 ug/ml]

[Protocol Download](#)

- Sandwich ELISA (Recombinant protein)

Detection limit for recombinant GST tagged AATF is 0.03 ng/ml as a capture antibody.

[Protocol Download](#)

- ELISA

- Immunofluorescence

Immunofluorescence of monoclonal antibody to AATF on HeLa cell. [antibody concentration 10 ug/ml]

## Gene Info — AATF

Entrez GeneID	<a href="#">26574</a>
---------------	-----------------------

GeneBank Accession#	<a href="#">BC000591</a>
---------------------	--------------------------

Protein Accession#	<a href="#">AAH00591</a>
--------------------	--------------------------

Gene Name	AATF
-----------	------

Gene Alias	CHE-1, CHE1, DED
------------	------------------

Gene Description	apoptosis antagonizing transcription factor
------------------	---------------------------------------------

Omim ID	<a href="#">608463</a>
---------	------------------------

## Gene Ontology

[Hyperlink](#)

## Gene Summary

The protein encoded by this gene was identified on the basis of its interaction with MAP3K12/DLK, a protein kinase known to be involved in the induction of cell apoptosis. This gene product contains a leucine zipper, which is a characteristic motif of transcription factors, and was shown to exhibit strong transactivation activity when fused to Gal4 DNA binding domain. Overexpression of this gene interfered with MAP3K12 induced apoptosis. [provided by RefSeq]

## Other Designations

-

## Disease

- [Breast Neoplasms](#)
- [Genetic Predisposition to Disease](#)
- [Obesity](#)