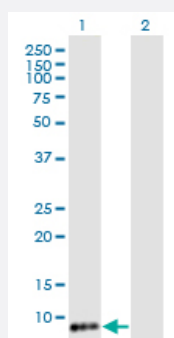


TIMM8B monoclonal antibody (M15), clone 8E5

Catalog # H00026521-M15

Size 100 ug

Applications

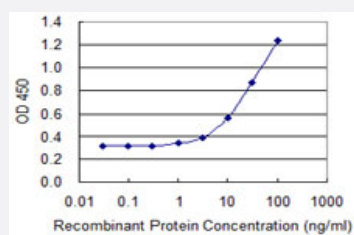


Western Blot (Transfected lysate)

Western Blot analysis of TIMM8B expression in transfected 293T cell line by TIMM8B monoclonal antibody (M15), clone 8E5.

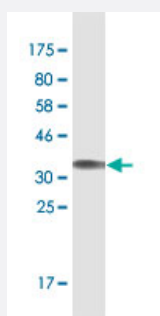
Lane 1: TIMM8B transfected lysate (9.3 KDa).

Lane 2: Non-transfected lysate.



Sandwich ELISA (Recombinant protein)

Detection limit for recombinant GST tagged TIMM8B is 0.3 ng/ml as a capture antibody.



Western Blot detection against Immunogen (35.7 KDa).

Specification

Product Description

Mouse monoclonal antibody raised against a full-length recombinant TIMM8B.

Immunogen	TIMM8B (NP_036591.1, 1 a.a. ~ 83 a.a) full-length recombinant protein with GST tag. MW of the GST tag alone is 26 KDa.
Sequence	MAELGEADEAELQRLVAAEQKKAQFTAQVHHFMELCWDKCVEKPGNRLDSRTENCLSSCVDR FIDTTLAITSRFAQVQKGGQ
Host	Mouse
Reactivity	Human
Interspecies Antigen Sequence	Mouse (97); Rat (97)
Isotype	IgG2a Kappa
Quality Control Testing	Antibody Reactive Against Recombinant Protein. Western Blot detection against Immunogen (35.7 KDa) .
Storage Buffer	In 1x PBS, pH 7.4
Storage Instruction	Store at -20°C or lower. Aliquot to avoid repeated freezing and thawing.

Applications

- Western Blot (Transfected lysate)

Western Blot analysis of TIMM8B expression in transfected 293T cell line by TIMM8B monoclonal antibody (M15), clone 8E5.

Lane 1: TIMM8B transfected lysate(9.3 KDa).

Lane 2: Non-transfected lysate.

[Protocol Download](#)

- Western Blot (Recombinant protein)

[Protocol Download](#)

- Sandwich ELISA (Recombinant protein)

Detection limit for recombinant GST tagged TIMM8B is 0.3 ng/ml as a capture antibody.

[Protocol Download](#)

- ELISA

Gene Info — TIMM8B

Entrez GeneID	26521
GeneBank Accession#	NM_012459.1
Protein Accession#	NP_036591.1
Gene Name	TIMM8B
Gene Alias	DDP2, FLJ21744, MGC102866, MGC117373, TIM8B
Gene Description	translocase of inner mitochondrial membrane 8 homolog B (yeast)
Omim ID	606659
Gene Ontology	Hyperlink
Gene Summary	This gene encodes a member of a well-conserved family of proteins with similarity to yeast Tim mitochondrial import proteins. This gene is encoded by a nuclear gene and is transported into the intermembrane space of the mitochondrion. When formed into complexes, these proteins guide membrane-spanning proteins across the mitochondrial intermembrane space before they are added into the mitochondrial inner membrane. This gene is adjacent to succinate dehydrogenase, subunit D (SDHD), in which mutations have been found in affected members of families with hereditary paraganglioma
Other Designations	mitochondrial import inner membrane translocase subunit Tim8 B translocase of inner mitochondrial membrane 8 homolog B

Disease

- [Cardiovascular Diseases](#)
- [Diabetes Mellitus](#)
- [Edema](#)