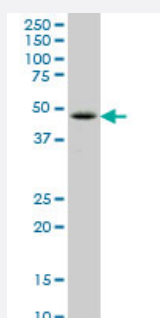


# LHX6 monoclonal antibody (M06), clone 2A2

Catalog # H00026468-M06

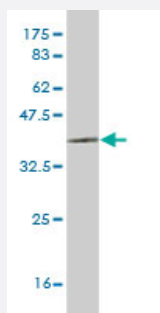
Size 100 ug

## Applications



### Western Blot (Cell lysate)

LHX6 monoclonal antibody (M06), clone 2A2 Western Blot analysis of LHX6 expression in HeLa S3 NE ( Cat # L013V3 ).



Western Blot detection against Immunogen (35.64 KDa) .

## Specification

<b>Product Description</b>	Mouse monoclonal antibody raised against a partial recombinant LHX6.
<b>Immunogen</b>	LHX6 (NP_055183, 274 a.a. ~ 363 a.a) partial recombinant protein with GST tag. MW of the GST tag alone is 26 KDa.
<b>Sequence</b>	HKKHTPQHVPVPPSGAPPSRLPSALSDDIHYTPFSSPERARMVTLHGYESQVQCGQVHCRLPYTA PPVHLKADMDGPLSNRGEKVILFQY
<b>Host</b>	Mouse
<b>Reactivity</b>	Human

Interspecies Antigen Sequence	Mouse (98); Rat (98)
Isotype	IgG2a Kappa
Quality Control Testing	Antibody Reactive Against Recombinant Protein. Western Blot detection against Immunogen (35.64 KDa) .
Storage Buffer	In 1x PBS, pH 7.4
Storage Instruction	Store at -20°C or lower. Aliquot to avoid repeated freezing and thawing.

## Applications

- Western Blot (Cell lysate)

LHX6 monoclonal antibody (M06), clone 2A2 Western Blot analysis of LHX6 expression in Hela S3 NE ( Cat # L013V3 ).

[Protocol Download](#)

- Western Blot (Recombinant protein)

[Protocol Download](#)

- ELISA

## Gene Info — LHX6

Entrez GeneID	<a href="#">26468</a>
GeneBank Accession#	<a href="#">NM_014368</a>
Protein Accession#	<a href="#">NP_055183</a>
Gene Name	LHX6
Gene Alias	LHX6.1, MGC119542, MGC119544, MGC119545
Gene Description	LIM homeobox 6
Omim ID	<a href="#">608215</a>
Gene Ontology	<a href="#">Hyperlink</a>

**Gene Summary**

This gene encodes a member of a large protein family that contains the LIM domain, a unique cysteine-rich zinc-binding domain. The encoded protein may function as a transcriptional regulator and may be involved in the control of differentiation and development of neural and lymphoid cells. Two alternatively spliced transcript variants encoding distinct isoforms have been described for this gene. Alternatively spliced transcript variants have been identified, but their biological validity has not been determined. [provided by RefSeq]

**Other Designations**

LIM homeobox protein 6|LIM homeodomain protein 6.1|OTTHUMP00000022046|OTTHUMP00000064113|OTTHUMP00000064114|OTTHUMP00000196635

**Disease**

- [Tobacco Use Disorder](#)