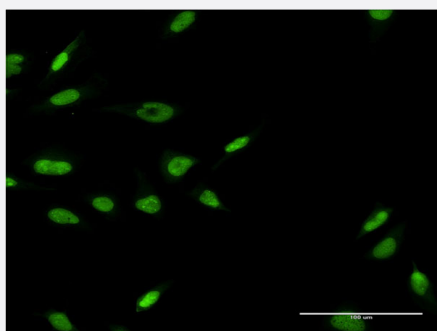


LHX6 monoclonal antibody (M02), clone 1B11

Catalog # H00026468-M02

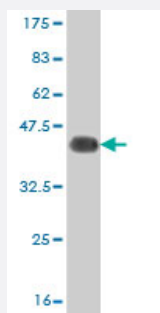
Size 100 ug

Applications



Immunofluorescence

Immunofluorescence of monoclonal antibody to LHX6 on HeLa cell . [antibody concentration 10 ug/ml]



Western Blot detection against Immunogen (35.64 KDa) .

Specification

Product Description	Mouse monoclonal antibody raised against a partial recombinant LHX6.
Immunogen	LHX6 (NP_055183, 274 a.a. ~ 363 a.a) partial recombinant protein with GST tag. MW of the GST tag alone is 26 KDa.
Sequence	HKKHTPQHVPVPPSGAPPSRLPSALSDDIHYTPFSSPERARMVTLHGYESQVQCGQVHCRLPYTA PPVHLKADMDGPLSNRGEKVILFQY
Host	Mouse
Reactivity	Human

Interspecies Antigen Sequence	Mouse (98); Rat (98)
Isotype	IgG2a Kappa
Quality Control Testing	Antibody Reactive Against Recombinant Protein. Western Blot detection against Immunogen (35.64 KDa) .
Storage Buffer	In 1x PBS, pH 7.4
Storage Instruction	Store at -20°C or lower. Aliquot to avoid repeated freezing and thawing.

Applications

- Western Blot (Recombinant protein)

[Protocol Download](#)

- ELISA
- Immunofluorescence

Immunofluorescence of monoclonal antibody to LHX6 on HeLa cell . [antibody concentration 10 ug/ml]

Gene Info — LHX6

Entrez GeneID	26468
GeneBank Accession#	NM_014368
Protein Accession#	NP_055183
Gene Name	LHX6
Gene Alias	LHX6.1, MGC119542, MGC119544, MGC119545
Gene Description	LIM homeobox 6
Omim ID	608215
Gene Ontology	Hyperlink

Gene Summary

This gene encodes a member of a large protein family that contains the LIM domain, a unique cysteine-rich zinc-binding domain. The encoded protein may function as a transcriptional regulator and may be involved in the control of differentiation and development of neural and lymphoid cells. Two alternatively spliced transcript variants encoding distinct isoforms have been described for this gene. Alternatively spliced transcript variants have been identified, but their biological validity has not been determined. [provided by RefSeq]

Other Designations

LIM homeobox protein 6|LIM homeodomain protein 6.1|OTTHUMP00000022046|OTTHUMP00000064113|OTTHUMP00000064114|OTTHUMP00000196635

Disease

- [Tobacco Use Disorder](#)