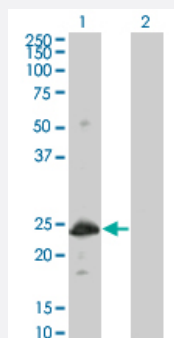


HSPB8 monoclonal antibody (M03), clone 5C3

Catalog # H00026353-M03

Size 100 ug

Applications

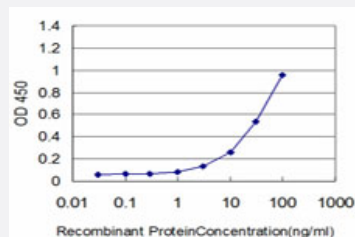


Western Blot (Transfected lysate)

Western Blot analysis of HSPB8 expression in transfected 293T cell line by HSPB8 monoclonal antibody (M03), clone 5C3.

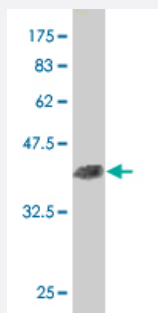
Lane 1: HSPB8 transfected lysate (35.446 KDa).

Lane 2: Non-transfected lysate.



Sandwich ELISA (Recombinant protein)

Detection limit for recombinant GST tagged HSPB8 is approximately 1 ng/ml as a capture antibody.



Western Blot detection against Immunogen (36.74 KDa) .

Specification

Product Description

Mouse monoclonal antibody raised against a partial recombinant HSPB8.

Immunogen	HSPB8 (NP_055180, 97 a.a. ~ 196 a.a) partial recombinant protein with GST tag. MW of the GST tag alone is 26 KDa.
Sequence	KVCVNVHSFKPEELMVKTKDGYVEVSGKHEEKQQEGGIVSKNFTKKIQLPAEVDPTVTFASLSP EGLLIIEAPQVPPYSTFGESSFNNELPQDSQEVCT
Host	Mouse
Reactivity	Human
Interspecies Antigen Sequence	Mouse (94); Rat (95)
Isotype	IgG2b Kappa
Quality Control Testing	Antibody Reactive Against Recombinant Protein. Western Blot detection against Immunogen (36.74 KDa) .
Storage Buffer	In 1x PBS, pH 7.4
Storage Instruction	Store at -20°C or lower. Aliquot to avoid repeated freezing and thawing.

Applications

- Western Blot (Transfected lysate)

Western Blot analysis of HSPB8 expression in transfected 293T cell line by HSPB8 monoclonal antibody (M03), clone 5C3.

Lane 1: HSPB8 transfected lysate(35.446 KDa).

Lane 2: Non-transfected lysate.

[Protocol Download](#)

- Western Blot (Recombinant protein)

[Protocol Download](#)

- Sandwich ELISA (Recombinant protein)

Detection limit for recombinant GST tagged HSPB8 is approximately 1ng/ml as a capture antibody.

[Protocol Download](#)

- ELISA

Gene Info — HSPB8

Entrez GeneID	26353
GeneBank Accession#	NM_014365
Protein Accession#	NP_055180
Gene Name	HSPB8
Gene Alias	CMT2L, DHMN2, E2IG1, H11, HMN2, HMN2A, HSP22
Gene Description	heat shock 22kDa protein 8
Omim ID	158590 608014 608673
Gene Ontology	Hyperlink
Gene Summary	The protein encoded by this gene belongs to the superfamily of small heat-shock proteins containing a conservative alpha-crystallin domain at the C-terminal part of the molecule. The expression of this gene is induced by estrogen in estrogen receptor-positive breast cancer cells, and this protein also functions as a chaperone in association with Bag3, a stimulator of macroautophagy. Thus, this gene appears to be involved in regulation of cell proliferation, apoptosis, and carcinogenesis, and mutations in this gene have been associated with different neuromuscular diseases, including Charcot-Marie-Tooth disease. [provided by RefSeq]
Other Designations	E2-induced gene 1 heat shock 27kDa protein 8 heat shock protein beta-8 protein kinase H11 small stress protein-like protein HSP22

Disease

- [Genetic Predisposition to Disease](#)
- [Head and Neck Neoplasms](#)
- [Lung Neoplasms](#)
- [Neoplasm Recurrence](#)
- [Neoplasms](#)
- [Pulmonary Disease](#)
- [Urinary Bladder Neoplasms](#)
- [Werner syndrome](#)