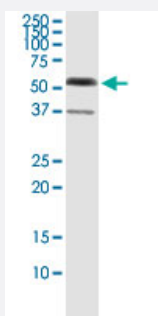


GAPDHS (Human) IP-WB Antibody Pair

Catalog # H00026330-PW2

Size 1 Set

Applications



Immunoprecipitation of GAPDHS transfected lysate using rabbit polyclonal anti-GAPDHS and Protein A Magnetic Bead ([U0007](#)), and immunoblotted with mouse purified polyclonal anti-GAPDHS.

Specification

Product Description	This IP-WB antibody pair set comes with one antibody for immunoprecipitation and another to detect the precipitated protein in western blot.
Reactivity	Human
Interspecies Antigen Sequence	Mouse (76); Rat (78)
Quality Control Testing	Immunoprecipitation-Western Blot (IP-WB) Immunoprecipitation of GAPDHS transfected lysate using rabbit polyclonal anti-GAPDHS and Protein A Magnetic Bead (U0007), and immunoblotted with mouse purified polyclonal anti-GAPDHS.
Supplied Product	Antibody pair set content: 1. Antibody pair for IP: rabbit polyclonal anti-GAPDHS (300 ul) 2. Antibody pair for WB: mouse purified polyclonal anti-GAPDHS (50 ug)
Storage Instruction	Store reagents of the antibody pair set at -20°C or lower. Please aliquot to avoid repeated freeze thaw cycle. Reagents should be returned to -20°C storage immediately after use.

Applications

- Immunoprecipitation-Western Blot

[Protocol Download](#)

Gene Info — GAPDHS

Entrez GeneID [26330](#)

Gene Name GAPDHS

Gene Alias GAPD2, GAPDH-2, GAPDS, HSD-35

Gene Description glyceraldehyde-3-phosphate dehydrogenase, spermatogenic

Omim ID [609169](#)

Gene Ontology [Hyperlink](#)

Gene Summary This gene encodes a protein belonging to the glyceraldehyde-3-phosphate dehydrogenase family of enzymes that play an important role in carbohydrate metabolism. Like its somatic cell counterpart, this sperm-specific enzyme functions in a nicotinamide adenine dinucleotide-dependent manner to remove hydrogen and add phosphate to glyceraldehyde 3-phosphate to form 1,3-diphosphoglycerate. During spermiogenesis, this enzyme may play an important role in regulating the switch between different energy-producing pathways, and it is required for sperm motility and male fertility. [provided by RefSeq]

Other Designations glyceraldehyde-3-phosphate dehydrogenase, testis-specific|spermatogenic cell-specific glyceraldehyde 3-phosphate dehydrogenase 2

Disease

- [Alzheimer disease](#)
- [Genetic Predisposition to Disease](#)