

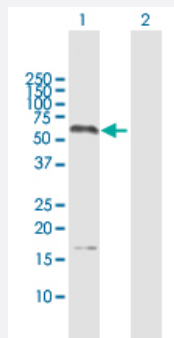
MaxPab®

GAPDHS MaxPab rabbit polyclonal antibody (D01)

Catalog # H00026330-D01

Size 100 uL

Applications

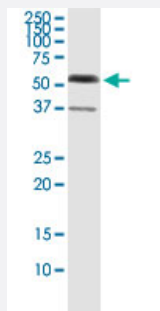


Western Blot (Transfected lysate)

Western Blot analysis of GAPDHS expression in transfected 293T cell line ([H00026330-T02](#)) by GAPDHS MaxPab polyclonal antibody.

Lane 1: GAPDHS transfected lysate(44.5 KDa).

Lane 2: Non-transfected lysate.



Immunoprecipitation

Immunoprecipitation of GAPDHS transfected lysate using anti-GAPDHS MaxPab rabbit polyclonal antibody and Protein A Magnetic Bead, and immunoblotted with GAPDHS purified MaxPab mouse polyclonal antibody (B01P) ([H00026330-B01P](#)).

Specification

Product Description

Rabbit polyclonal antibody raised against a full-length human GAPDHS protein.

Immunogen

GAPDHS (NP_055179.1, 1 a.a. ~ 408 a.a) full-length human protein.

Sequence

MSKRDMLTNVTVVQLLRQPCPVTRAPPPPEPKAEVEPQPQPEPTPVREEIKPPPPPLPPHPATP
PPKMVSVARELTVGINGFGRIGRLVLRACMEKGVKVVAVNDPFIDPEYVMVMFKYDSTHGRYKGS
VEFRNGQLVVDNHEISVYQCKEPKQIPWRAVGSPYVVESTGVYLSIQAASDHISAGAQRVVISAPS
PDAPMFVMGVNENDYNPGSMNIVSNASCTTNCLAPLAKVIHERFGVEGLMTTVHSYTATQKTVD
GPSRKAWRDGRGAHQNIIPASTGAAKAVTKVPELKGKLTGMAFRVPTPDVSVVDLTCRLAQAPAP
YSAIKEAVKAAAKGPMAGILAYTEDEVVSTDFLGDTHTSSIFDAKAGIALNDNFVKLISWYDNEYGYS
HRVVDLLRYMFSRDK

Host	Rabbit
Reactivity	Human
Interspecies Antigen Sequence	Mouse (76); Rat (78)
Quality Control Testing	Antibody reactive against mammalian transfected lysate.
Storage Buffer	No additive
Storage Instruction	Store at -20°C or lower. Aliquot to avoid repeated freezing and thawing.

Applications

- Western Blot (Transfected lysate)

Western Blot analysis of GAPDHS expression in transfected 293T cell line ([H00026330-T02](#)) by GAPDHS MaxPab polyclonal antibody.

Lane 1: GAPDHS transfected lysate(44.5 KDa).

Lane 2: Non-transfected lysate.

[Protocol Download](#)

- Immunoprecipitation

Immunoprecipitation of GAPDHS transfected lysate using anti-GAPDHS MaxPab rabbit polyclonal antibody and Protein A Magnetic Bead, and immunoblotted with GAPDHS purified MaxPab mouse polyclonal antibody (B01P) ([H00026330-B01P](#)).

[Protocol Download](#)

Gene Info — GAPDHS

Entrez GeneID	26330
GeneBank Accession#	NM_014364.3
Protein Accession#	NP_055179.1
Gene Name	GAPDHS
Gene Alias	GAPD2, GAPDH-2, GAPDS, HSD-35
Gene Description	glyceraldehyde-3-phosphate dehydrogenase, spermatogenic
Omim ID	609169

Gene Ontology

[Hyperlink](#)

Gene Summary

This gene encodes a protein belonging to the glyceraldehyde-3-phosphate dehydrogenase family of enzymes that play an important role in carbohydrate metabolism. Like its somatic cell counterpart, this sperm-specific enzyme functions in a nicotinamide adenine dinucleotide-dependent manner to remove hydrogen and add phosphate to glyceraldehyde 3-phosphate to form 1,3-diphosphoglycerate. During spermiogenesis, this enzyme may play an important role in regulating the switch between different energy-producing pathways, and it is required for sperm motility and male fertility. [provided by RefSeq]

Other Designations

glyceraldehyde-3-phosphate dehydrogenase, testis-specific|spermatogenic cell-specific glyceraldehyde 3-phosphate dehydrogenase 2

Disease

- [Alzheimer disease](#)
- [Genetic Predisposition to Disease](#)