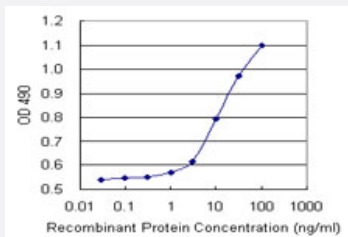


# FGF21 (Human) Matched Antibody Pair

Catalog # H00026291-AP31

Size 1 Set

## Applications



Sandwich ELISA detection sensitivity ranging from 1 ng/ml to 100 ng/ml.

## Specification

<b>Product Description</b>	This antibody pair set comes with a matched antibody pair to detect and quantify the protein level of human FGF21.
<b>Reactivity</b>	Human
<b>Interspecies Antigen Sequence</b>	Mouse (79); Rat (79)
<b>Quality Control Testing</b>	Standard curve using recombinant protein ( H00026291-P01 ) as an analyte. Sandwich ELISA detection sensitivity ranging from 1 ng/ml to 100 ng/ml.
<b>Supplied Product</b>	Antibody pair set content: 1. Capture antibody: rabbit MaxPab® affinity purified polyclonal anti-FGF21 (100 ug) 2. Detection antibody: biotinylated rabbit MaxPab® affinity purified polyclonal anti-FGF21 (20 ug) *Reagents are sufficient for at least 1-2 x 96 well plates using recommended protocols.
<b>Storage Instruction</b>	Store reagents of the antibody pair set at -20°C or lower. Please aliquot to avoid repeated freeze thaw cycle. Reagents should be returned to -20°C storage immediately after use.

## Applications

- ELISA Pair (Recombinant protein)

[Protocol Download](#)

## Gene Info — FGF21

**Entrez GeneID** [26291](#)

**Gene Name** FGF21

**Gene Alias** -

**Gene Description** fibroblast growth factor 21

**Omim ID** [609436](#)

**Gene Ontology** [Hyperlink](#)

**Gene Summary** The protein encoded by this gene is a member of the fibroblast growth factor (FGF) family. FGF family members possess broad mitogenic and cell survival activities and are involved in a variety of biological processes including embryonic development, cell growth, morphogenesis, tissue repair, tumor growth and invasion. The function of this growth factor has not yet been determined. [provided by RefSeq]

**Other Designations** -

## Pathway

- [MAPK signaling pathway](#)
- [Melanoma](#)
- [Pathways in cancer](#)
- [Regulation of actin cytoskeleton](#)