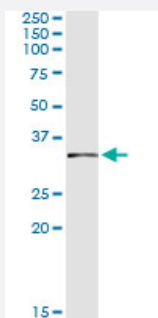


# FBXO6 (Human) IP-WB Antibody Pair

Catalog # H00026270-PW1

Size 1 Set

## Applications



Immunoprecipitation of FBXO6 transfected lysate using mouse monoclonal anti-FBXO6 and Protein A Magnetic Bead ([U0007](#)), and immunoblotted with rabbit polyclonal anti-FBXO6.

## Specification

<b>Product Description</b>	This IP-WB antibody pair set comes with one antibody for immunoprecipitation and another to detect the precipitated protein in western blot.
<b>Reactivity</b>	Human
<b>Interspecies Antigen Sequence</b>	Mouse (75); Rat (78)
<b>Quality Control Testing</b>	Immunoprecipitation-Western Blot (IP-WB) Immunoprecipitation of FBXO6 transfected lysate using mouse monoclonal anti-FBXO6 and Protein A Magnetic Bead ( <a href="#">U0007</a> ), and immunoblotted with rabbit polyclonal anti-FBXO6.
<b>Supplied Product</b>	Antibody pair set content: 1. Antibody pair for IP: mouse monoclonal anti-FBXO6 (300 ul) 2. Antibody pair for WB: rabbit polyclonal anti-FBXO6 (50 ul)
<b>Storage Instruction</b>	Store reagents of the antibody pair set at -20°C or lower. Please aliquot to avoid repeated freeze thaw cycle. Reagents should be returned to -20°C storage immediately after use.

## Applications

- Immunoprecipitation-Western Blot

[Protocol Download](#)

## Gene Info — FBXO6

**Entrez GeneID** [26270](#)

**Gene Name** FBXO6

**Gene Alias** FBG2, FBS2, FBX6, Fbx6b

**Gene Description** F-box protein 6

**Omim ID** [605647](#)

**Gene Ontology** [Hyperlink](#)

**Gene Summary** This gene encodes a member of the F-box protein family which is characterized by an approximately 40 amino acid motif, the F-box. The F-box proteins constitute one of the four subunits of the ubiquitin protein ligase complex called SCFs (SKP1-cullin-F-box), which function in phosphorylation-dependent ubiquitination. The F-box proteins are divided into 3 classes: Fbws containing WD-40 domains, Fbls containing leucine-rich repeats, and Fbxs containing either different protein-protein interaction modules or no recognizable motifs. The protein encoded by this gene belongs to the Fbxs class, and its C-terminal region is highly similar to that of rat NFB42 (neural F Box 42 kDa) which may be involved in the control of the cell cycle. [provided by RefSeq]

**Other Designations** F-box only protein 6|F-box protein FBG2|F-box protein Fbx6|OTTHUMP00000002267