

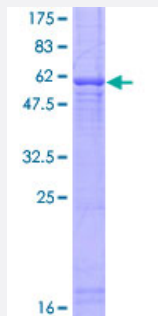
Full-Length

FBXO6 (Human) Recombinant Protein (P01)

Catalog # H00026270-P01

Size 25 ug, 10 ug

Applications



Specification

Product Description

Human FBXO6 full-length ORF (AAH20880.1, 1 a.a. - 293 a.a.) recombinant protein with GST-tag at N-terminal.

Sequence

MDAPHSKAALDSINELPENILLELFTHVPARQLLLNCRLVCSLWRDLIDLMTLWKRKCLREGFITKD
WDQPVADWKIFYFLRSLHRNLLRNPCAEDMFAWQIDFNGGDRWKVESLPGAHTDFDPKVK
KYFVTSYEMCLKSQVLVDLVAEGYWEELDTFRPDMVKDWFAARADCGCTYQLKVQLASADYFV
LASFEPPTVIQQWNNATWTEVSYTFSDYPRGVRYILFQHGGRTQYWAGWYGPRVTNSSIVVSP
KMTRNQASSEAPGQKHGQEEAAQSPYRAVVQIF

Host

Wheat Germ (in vitro)

Theoretical MW (kDa)

57.97

Interspecies Antigen Sequence

Mouse (75); Rat (78)

Preparation Method

[in vitro wheat germ expression system](#)

Purification

Glutathione Sepharose 4 Fast Flow

Quality Control Testing

12.5% SDS-PAGE Stained with Coomassie Blue.

Storage Buffer

50 mM Tris-HCl, 10 mM reduced Glutathione, pH=8.0 in the elution buffer.

Storage Instruction

Store at -80°C. Aliquot to avoid repeated freezing and thawing.

Note

Best use within three months from the date of receipt of this protein.

Applications

- Enzyme-linked Immunoabsorbent Assay
- Western Blot (Recombinant protein)
- Antibody Production
- Protein Array

Gene Info — FBXO6

Entrez GeneID[26270](#)**GeneBank Accession#**[BC020880](#)**Protein Accession#**[AAH20880.1](#)**Gene Name**

FBXO6

Gene Alias

FBG2, FBS2, FBX6, Fbx6b

Gene Description

F-box protein 6

Omim ID[605647](#)**Gene Ontology**[Hyperlink](#)**Gene Summary**

This gene encodes a member of the F-box protein family which is characterized by an approximately 40 amino acid motif, the F-box. The F-box proteins constitute one of the four subunits of the ubiquitin protein ligase complex called SCFs (SKP1-cullin-F-box), which function in phosphorylation-dependent ubiquitination. The F-box proteins are divided into 3 classes: Fbws containing WD-40 domains, Fbls containing leucine-rich repeats, and Fbxs containing either different protein-protein interaction modules or no recognizable motifs. The protein encoded by this gene belongs to the Fbxs class, and its C-terminal region is highly similar to that of rat NFB42 (neural F Box 42 kDa) which may be involved in the control of the cell cycle. [provided by RefSeq]

Other Designations

F-box only protein 6|F-box protein FBG2|F-box protein Fbx6|OTTHUMP00000002267