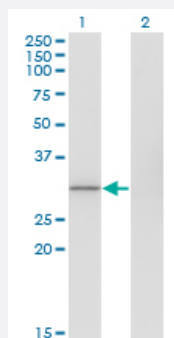


FBXO6 monoclonal antibody (M02A), clone 7D1

Catalog # H00026270-M02A

Size 200 uL

Applications

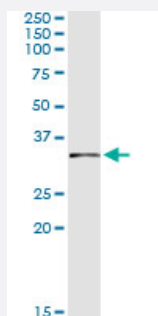


Western Blot (Transfected lysate)

Western Blot analysis of FBXO6 expression in transfected 293T cell line by FBXO6 monoclonal antibody (M02A), clone 7D1.

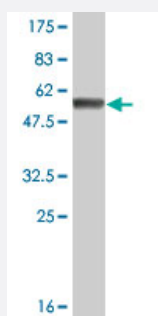
Lane 1: FBXO6 transfected lysate (Predicted MW: 33.9 KDa).

Lane 2: Non-transfected lysate.



Immunoprecipitation

Immunoprecipitation of FBXO6 transfected lysate using anti-FBXO6 monoclonal antibody and Protein A Magnetic Bead, and immunoblotted with FBXO6 MaxPab rabbit polyclonal antibody.



Western Blot detection against Immunogen (57.97 KDa) .

Specification

Product Description

Mouse monoclonal antibody raised against a full-length recombinant FBXO6.

Immunogen	FBXO6 (AAH20880.1, 1 a.a. ~ 293 a.a) full-length recombinant protein with GST tag. MW of the GST tag alone is 26 KDa.
Sequence	MDAPHSKAALDSINELPENILLELFTHVPARQLLLNCRLVCSLWRDLIDMTLWKRKCLREGFITKD WDQPVADWKIFYFLRSLHRNLLRNPCAEEEDMFAWQIDFNGGDRWKVESLPGAHGTDFFDPKVK KYFVTSYEMCLKSQLVDLVAEGYWEELLDTRPDMVKDWFAARADCGCTYQLKVQLASADYFV LASFEPPPVTIQWNNATWTEVSYTFSDYPRGVRYILFQHGGRTQYWAGWYGPRVTNSSIVVSP KMTRNQASSEAAQPGQKHGQEEAAQSPYRAVVQIF
Host	Mouse
Reactivity	Human
Interspecies Antigen Sequence	Mouse (75); Rat (78)
Isotype	IgM Kappa
Quality Control Testing	Antibody Reactive Against Recombinant Protein. Western Blot detection against Immunogen (57.97 KDa) .
Storage Buffer	In ascites fluid
Storage Instruction	Store at -20°C or lower. Aliquot to avoid repeated freezing and thawing.

Applications

- Western Blot (Transfected lysate)

Western Blot analysis of FBXO6 expression in transfected 293T cell line by FBXO6 monoclonal antibody (M02A), clone 7D1.

Lane 1: FBXO6 transfected lysate (Predicted MW: 33.9 KDa).

Lane 2: Non-transfected lysate.

[Protocol Download](#)

- Western Blot (Recombinant protein)

[Protocol Download](#)

- Immunoprecipitation

Immunoprecipitation of FBXO6 transfected lysate using anti-FBXO6 monoclonal antibody and Protein A Magnetic Bead, and immunoblotted with FBXO6 MaxPab rabbit polyclonal antibody.

[Protocol Download](#)

- ELISA

Gene Info — FBXO6

Entrez GeneID [26270](#)**GeneBank Accession#** [BC020880](#)**Protein Accession#** [AAH20880.1](#)**Gene Name** FBXO6**Gene Alias** FBG2, FBS2, FBX6, Fbx6b**Gene Description** F-box protein 6**Omim ID** [605647](#)**Gene Ontology** [Hyperlink](#)

Gene Summary

This gene encodes a member of the F-box protein family which is characterized by an approximately 40 amino acid motif, the F-box. The F-box proteins constitute one of the four subunits of the ubiquitin protein ligase complex called SCFs (SKP1-cullin-F-box), which function in phosphorylation-dependent ubiquitination. The F-box proteins are divided into 3 classes: Fbws containing WD-40 domains, Fbls containing leucine-rich repeats, and Fbxs containing either different protein-protein interaction modules or no recognizable motifs. The protein encoded by this gene belongs to the Fbxs class, and its C-terminal region is highly similar to that of rat NFB42 (neural F Box 42 kDa) which may be involved in the control of the cell cycle. [provided by RefSeq]

Other Designations F-box only protein 6|F-box protein FBG2|F-box protein Fbx6|OTTHUMP00000002267