

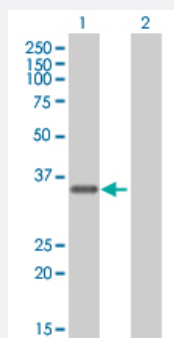
MaxPab®

FBXO6 purified MaxPab mouse polyclonal antibody (B01P)

Catalog # H00026270-B01P

Size 50 ug

Applications



Western Blot (Transfected lysate)

Western Blot analysis of FBXO6 expression in transfected 293T cell line ([H00026270-T01](#)) by FBXO6 MaxPab polyclonal antibody.

Lane 1: FBXO6 transfected lysate(32.23 KDa).

Lane 2: Non-transfected lysate.

Specification

Product Description

Mouse polyclonal antibody raised against a full-length human FBXO6 protein.

Immunogen

FBXO6 (NP_060908.1, 1 a.a. ~ 293 a.a) full-length human protein.

Sequence

MDAPHSKAALDSINELPENILLELFTHVPARQLLLNCRLVCSLWRDLIDMTLWKRKCLREGFITKD
WDQPVADWKIFYFLRSLHRNLLRNPCAEE DMFAWQIDFNGGDRWKVESLPGAHGTD FPD PKVK
KYFVTSYEMCLKSQ LVDLVAEGYWEELDTFRPDMVKDWFAARADCGCTYQLKVQLASADYFV
LASFEPPPVTIQQWNNATWTEVSYTFSDYPRGVRYILFQHGGRTDQYWAGWYGPRVTNSSIVVSP
KMTRNQASSEAQPGQKHGQEEAAQSPYRAVVQIF

Host

Mouse

Reactivity

Human

Interspecies Antigen Sequence

Mouse (75); Rat (78)

Quality Control Testing

Antibody reactive against mammalian transfected lysate.

Storage Buffer

In 1x PBS, pH 7.4

Storage Instruction

Store at -20°C or lower. Aliquot to avoid repeated freezing and thawing.

Applications

- Western Blot (Transfected lysate)

Western Blot analysis of FBXO6 expression in transfected 293T cell line ([H00026270-T01](#)) by FBXO6 MaxPab polyclonal antibody.

Lane 1: FBXO6 transfected lysate(32.23 KDa).

Lane 2: Non-transfected lysate.

[Protocol Download](#)

Gene Info — FBXO6

Entrez GeneID [26270](#)

GeneBank Accession# [NM_018438.4](#)

Protein Accession# [NP_060908.1](#)

Gene Name FBXO6

Gene Alias FBG2, FBS2, FBX6, Fbx6b

Gene Description F-box protein 6

Omim ID [605647](#)

Gene Ontology [Hyperlink](#)

Gene Summary This gene encodes a member of the F-box protein family which is characterized by an approximately 40 amino acid motif, the F-box. The F-box proteins constitute one of the four subunits of the ubiquitin protein ligase complex called SCFs (SKP1-cullin-F-box), which function in phosphorylation-dependent ubiquitination. The F-box proteins are divided into 3 classes: Fbws containing WD-40 domains, Fbls containing leucine-rich repeats, and Fbxs containing either different protein-protein interaction modules or no recognizable motifs. The protein encoded by this gene belongs to the Fbxs class, and its C-terminal region is highly similar to that of rat NFB42 (neural F Box 42 kDa) which may be involved in the control of the cell cycle. [provided by RefSeq]

Other Designations F-box only protein 6|F-box protein FBG2|F-box protein Fbx6|OTTHUMP00000002267