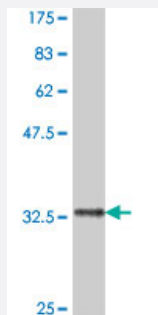


FBXO8 polyclonal antibody (A01)

Catalog # H00026269-A01

Size 50 uL

Applications



Western Blot detection against Immunogen (34.58 KDa) .

Specification

Product Description	Mouse polyclonal antibody raised against a partial recombinant FBXO8.
Immunogen	FBXO8 (NP_036312, 1 a.a. ~ 77 a.a) partial recombinant protein with GST tag.
Sequence	MGQGLWRVVRNQQLQQEGYSEQGYLTREQSRRMAASNISNTNHRKQVQGGIDYHLLKARKSKE QEGFINLEMLPPE
Host	Mouse
Reactivity	Human
Interspecies Antigen Sequence	Mouse (95); Rat (95)
Quality Control Testing	Antibody Reactive Against Recombinant Protein. Western Blot detection against Immunogen (34.58 KDa) .
Storage Buffer	50 % glycerol
Storage Instruction	Store at -20°C or lower. Aliquot to avoid repeated freezing and thawing.

Applications

- Western Blot (Recombinant protein)

[Protocol Download](#)

- ELISA

Gene Info — FBXO8

Entrez GeneID [26269](#)

GeneBank Accession# [NM_012180](#)

Protein Accession# [NP_036312](#)

Gene Name FBXO8

Gene Alias DC10, FBS, FBX8

Gene Description F-box protein 8

Omim ID [605649](#)

Gene Ontology [Hyperlink](#)

Gene Summary

This gene encodes a member of the F-box protein family which is characterized by an approximately 40 amino acid motif, the F-box. The F-box proteins constitute one of the four subunits of the ubiquitin protein ligase complex called SCFs (SKP1-cullin-F-box), which function in phosphorylation-dependent ubiquitination. The F-box proteins are divided into 3 classes: Fbws containing WD-40 domains, Fbls containing leucine-rich repeats, and Fbxs containing either different protein-protein interaction modules or no recognizable motifs. The protein encoded by this gene belongs to the Fbxs class. It contains a C-terminal amino acid sequence that bears a significant similarity with a portion of yeast Sec7p, a critical regulator of vesicular protein transport. This human protein may interact with ADP-ribosylation factor(s)(ARFs) and exhibit ARF-GEF (guanine nucleotide exchange factor) activity. [provided by RefSeq]

Other Designations F-box only protein 8|F-box protein Fbx8

Disease

- [Amyotrophic lateral sclerosis](#)
- [Genetic Predisposition to Disease](#)