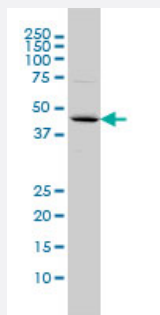


FBXO25 monoclonal antibody (M01), clone 2F1

Catalog # H00026260-M01

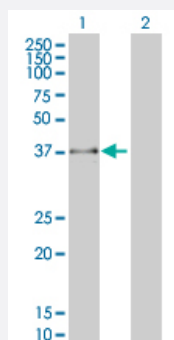
Size 100 ug

Applications



Western Blot (Cell lysate)

FBXO25 monoclonal antibody (M01), clone 2F1 Western Blot analysis of FBXO25 expression in COLO 320 HSR (Cat # L020V1).

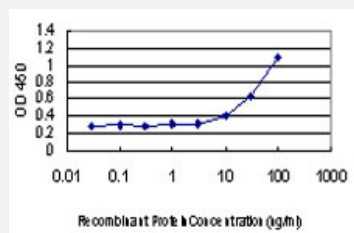


Western Blot (Transfected lysate)

Western Blot analysis of FBXO25 expression in transfected 293T cell line by FBXO25 monoclonal antibody (M01), clone 2F1.

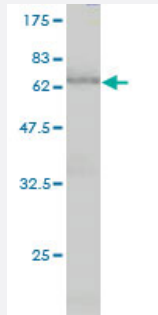
Lane 1: FBXO25 transfected lysate(43 KDa).

Lane 2: Non-transfected lysate.



Sandwich ELISA (Recombinant protein)

Detection limit for recombinant GST tagged FBXO25 is approximately 3ng/ml as a capture antibody.



Western Blot detection against Immunogen (66.11 KDa) .

Specification

Product Description	Mouse monoclonal antibody raised against a full length recombinant FBXO25.
Immunogen	FBXO25 (AAH50393, 1 a.a. ~ 367 a.a) full-length recombinant protein with GST tag. MW of the GST tag alone is 26 KDa.
Sequence	MPFLGQDWRSPGWSWIKTEDGWKRCESCSQKLERENNHCNISHSILNSEDGEIFNNEEHEYAS KKRKKDHFNRDNTNTQSFYREKWYVHKESTKERHGYCTLGEAFNRDLDFSSAIQDIRRFNYVVKLLQ LIAKSQLTSLSGVAQKNYFNILDKIVQKVLDDHHNPRLIKDLLQDLSS TLCILIRGVGKSVLVGNINWI CRLETILAWQQQLQDLQMTKQVNNGLTSLDPLHMLNNILYRFSDGWDIITLGQVTPPLYMLSEDR QLWKKLCQYHFAEKQFCRHLILSEKGHIEWKLMYFALQKHYPKEQYGD TLHFCRHCSILFWKDY HLALLFKDSGHPCTAADPDSCFTPVSPQHFIDLFKF
Host	Mouse
Reactivity	Human
Interspecies Antigen Sequence	Mouse (86); Rat (86)
Isotype	IgG2a kappa
Quality Control Testing	Antibody Reactive Against Recombinant Protein. Western Blot detection against Immunogen (66.11 KDa) .
Storage Buffer	In 1x PBS, pH 7.4
Storage Instruction	Store at -20°C or lower. Aliquot to avoid repeated freezing and thawing.

Applications

- Western Blot (Cell lysate)

FBXO25 monoclonal antibody (M01), clone 2F1 Western Blot analysis of FBXO25 expression in COLO 320 HSR (Cat # L020V1).

[Protocol Download](#)

- Western Blot (Transfected lysate)

Western Blot analysis of FBXO25 expression in transfected 293T cell line by FBXO25 monoclonal antibody (M01), clone 2F1.

Lane 1: FBXO25 transfected lysate(43 KDa).

Lane 2: Non-transfected lysate.

[Protocol Download](#)

- Western Blot (Recombinant protein)

[Protocol Download](#)

- Sandwich ELISA (Recombinant protein)

Detection limit for recombinant GST tagged FBXO25 is approximately 3ng/ml as a capture antibody.

[Protocol Download](#)

- ELISA

Gene Info — FBXO25

Entrez GeneID	26260
---------------	-----------------------

GeneBank Accession#	BC050393
---------------------	--------------------------

Protein Accession#	AAH50393
--------------------	--------------------------

Gene Name	FBXO25
-----------	--------

Gene Alias	FBX25, MGC20256, MGC51975
------------	---------------------------

Gene Description	F-box protein 25
------------------	------------------

Omim ID	609098
---------	------------------------

Gene Ontology	Hyperlink
---------------	---------------------------

Gene Summary

This gene encodes a member of the F-box protein family which is characterized by an approximately 40 amino acid motif, the F-box. The F-box proteins constitute one of the four subunits of ubiquitin protein ligase complex called SCFs (SKP1-cullin-F-box), which function in phosphorylation-dependent ubiquitination. The F-box proteins are divided into 3 classes: Fbws containing WD-40 domains, Fbls containing leucine-rich repeats, and Fbxs containing either different protein-protein interaction modules or no recognizable motifs. The protein encoded by this gene belongs to the Fbx class. Three alternatively spliced transcript variants encoding distinct isoforms have been found for this gene. [provided by RefSeq]

Other Designations

F-box only protein 25|F-box protein Fbx25|OTTHUMP00000115399

Disease

- [Kidney Failure](#)