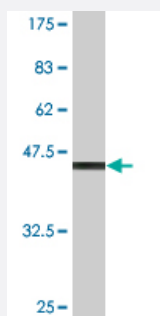


# CLEC4E monoclonal antibody (M01A), clone 2F2

Catalog # H00026253-M01A

Size 200 uL

## Applications



Western Blot detection against Immunogen (49.83 KDa) .

## Specification

<b>Product Description</b>	Mouse monoclonal antibody raised against a full length recombinant CLEC4E.
<b>Immunogen</b>	CLEC4E (AAH00715, 1 a.a. ~ 219 a.a) full-length recombinant protein with GST tag. MW of the GST tag alone is 26 KDa.
<b>Sequence</b>	MNSSKSSETQCTERGCFSSQMFLWTVAGIPILFLSACFITRCVVTFRIFQTCDEKKFQLPENFTEL SCYNYGSGSVKNCCPLNWEYFQSSCYFFSTDTISWALSLKNCSAMGAHLVVINSQEEQEFLSYK KPKMREFFIGLSDQVVEGQWQWVDGTPLTKSLSFWDVGEPNNIATLEDCAITMRDSSNPRQNWN DVTCLNLYFRICEMVGINPLNKGKSL
<b>Host</b>	Mouse
<b>Reactivity</b>	Human
<b>Interspecies Antigen Sequence</b>	Mouse (66); Rat (67)
<b>Isotype</b>	IgM Kappa
<b>Quality Control Testing</b>	Antibody Reactive Against Recombinant Protein. Western Blot detection against Immunogen (49.83 KDa) .
<b>Storage Buffer</b>	In ascites fluid
<b>Storage Instruction</b>	Store at -20°C or lower. Aliquot to avoid repeated freezing and thawing.

## Applications

- Western Blot (Recombinant protein)

[Protocol Download](#)

- ELISA

## Gene Info — CLEC4E

Entrez GeneID [26253](#)

GeneBank Accession# [BC000715](#)

Protein Accession# [AAH00715](#)

Gene Name CLEC4E

Gene Alias CLECSF9, MINCLE

Gene Description C-type lectin domain family 4, member E

Omim ID [609962](#)

Gene Ontology [Hyperlink](#)

**Gene Summary**

This gene encodes a member of the C-type lectin/C-type lectin-like domain (CTL/CTLD) superfamily. Members of this family share a common protein fold and have diverse functions, such as cell adhesion, cell-cell signalling, glycoprotein turnover, and roles in inflammation and immune response. The encoded type II transmembrane protein is a downstream target of CCAAT/enhancer binding protein (C/EBP), beta (CEBPB) and may play a role in inflammation. Alternative splice variants have been described but their full-length sequence has not been determined. This gene is closely linked to other CTL/CTLD superfamily members on chromosome 12p13 in the natural killer gene complex region. [provided by RefSeq]

**Other Designations**

C-type (calcium dependent, carbohydrate-recognition domain) lectin, superfamily member 9|macrophage-inducible C-type lectin