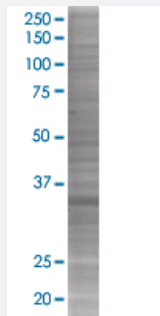


BRDG1 293T Cell Transient Overexpression Lysate(Denatured)

Catalog # H00026228-T01

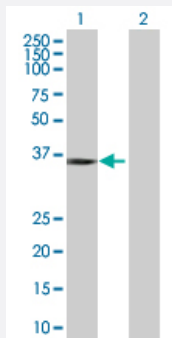
Size 100 uL

Applications



SDS-PAGE Gel

BRDG1 transfected lysate



Western Blot

Lane 1: BRDG1 transfected lysate (34.3 KDa).

Lane 2: Non-transfected lysate.

Specification

Transfected Cell Line	293T
Plasmid	pCMV-BRDG1 full-length
Host	Human
Theoretical MW (kDa)	34.3
Interspecies Antigen Sequence	Mouse (83); Rat (84)

Quality Control Testing

Transient overexpression cell lysate was tested with Anti-BRDG1 antibody ([H00026228-B01](#)) by Western Blots.
 SDS-PAGE Gel
 BRDG1 transfected lysate
 Western Blot
 Lane 1: BRDG1 transfected lysate (34.3 KDa).
 Lane 2: Non-transfected lysate.

Storage Buffer

1X Sample Buffer (50 mM Tris-HCl, 2% SDS, 10% glycerol, 300 mM 2-mercaptoethanol, 0.01% Bromophenol blue)

Storage Instruction

Store at -80°C. Aliquot to avoid repeated freezing and thawing.

Applications

- Western Blot

Gene Info — STAP1

Entrez GeneID

[26228](#)

GeneBank Accession#

[NM_012108](#)

Protein Accession#

[NP_036240](#)

Gene Name

STAP1

Gene Alias

BRDG1, STAP-1

Gene Description

signal transducing adaptor family member 1

Omim ID

[604298](#)

Gene Ontology

[Hyperlink](#)

Gene Summary

The protein encoded by this gene functions as a docking protein acting downstream of Tec tyrosine kinase in B cell antigen receptor signaling. The protein is directly phosphorylated by Tec in vitro where it participates in a positive feedback loop, increasing Tec activity. [provided by RefSeq]

Other Designations

BCR downstream signaling 1|OTTHUMP00000159640|signal-transducing adaptor protein-1

Disease

- [Parkinson disease](#)

- [Tobacco Use Disorder](#)