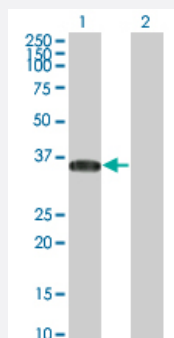


BRDG1 monoclonal antibody (M01), clone 5A10

Catalog # H00026228-M01

Size 100 ug

Applications

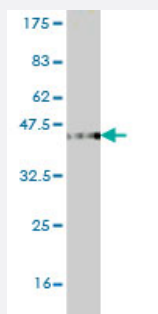


Western Blot (Transfected lysate)

Western Blot analysis of BRDG1 expression in transfected 293T cell line by BRDG1 monoclonal antibody (M01), clone 5A10.

Lane 1: BRDG1 transfected lysate(34.3 KDa).

Lane 2: Non-transfected lysate.



Western Blot detection against Immunogen (37.62 KDa) .

Specification

Product Description	Mouse monoclonal antibody raised against a partial recombinant BRDG1.
Immunogen	BRDG1 (NP_036240, 186 a.a. ~ 293 a.a) partial recombinant protein with GST tag. MW of the GST tag alone is 26 KDa.
Sequence	EATEMLQKNPSLGNMILRPGSDSRNYSITRQEIDPRIKHYKVMSVGQNYTIELEKPVTLPLNLFVIDY FVKETRGNLRPFICSTDENTGQEPSMEGRSEKLKKNPH
Host	Mouse
Reactivity	Human

Interspecies Antigen Sequence	Mouse (83); Rat (84)
Isotype	IgG1 Kappa
Quality Control Testing	Antibody Reactive Against Recombinant Protein. Western Blot detection against Immunogen (37.62 KDa) .
Storage Buffer	In 1x PBS, pH 7.4
Storage Instruction	Store at -20°C or lower. Aliquot to avoid repeated freezing and thawing.

Applications

- Western Blot (Transfected lysate)

Western Blot analysis of BRDG1 expression in transfected 293T cell line by BRDG1 monoclonal antibody (M01), clone 5A10.

Lane 1: BRDG1 transfected lysate(34.3 KDa).

Lane 2: Non-transfected lysate.

[Protocol Download](#)

- Western Blot (Recombinant protein)

[Protocol Download](#)

- ELISA

Gene Info — STAP1

Entrez GeneID	26228
GeneBank Accession#	NM_012108
Protein Accession#	NP_036240
Gene Name	STAP1
Gene Alias	BRDG1, STAP-1
Gene Description	signal transducing adaptor family member 1
Omim ID	604298
Gene Ontology	Hyperlink

Gene Summary

The protein encoded by this gene functions as a docking protein acting downstream of Tec tyrosine kinase in B cell antigen receptor signaling. The protein is directly phosphorylated by Tec in vitro where it participates in a positive feedback loop, increasing Tec activity. [provided by RefSeq]

Other Designations

BCR downstream signaling 1|OTTHUMP00000159640|signal-transducing adaptor protein-1

Disease

- [Parkinson disease](#)
- [Tobacco Use Disorder](#)