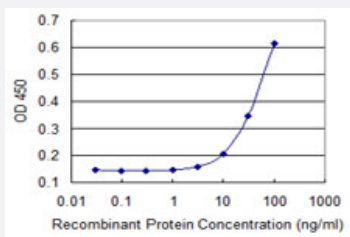


SHFM3P1 monoclonal antibody (M15), clone 2C5

Catalog # H00026226-M15

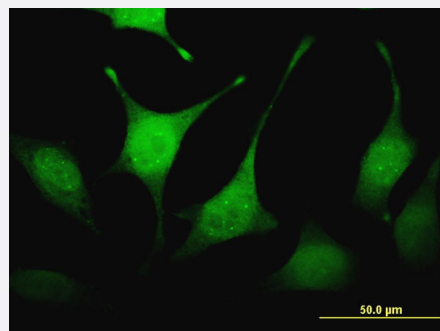
Size 100 ug

Applications



Sandwich ELISA (Recombinant protein)

Detection limit for recombinant GST tagged FBXW4P1 is 3 ng/ml as a capture antibody.



Immunofluorescence

Immunofluorescence of monoclonal antibody to FBXW4P1 on HeLa cell .
[antibody concentration 15 ug/ml]

Specification

Product Description

Mouse monoclonal antibody raised against a partial recombinant SHFM3P1.

Immunogen

SHFM3P1 (AAF04527, 31 a.a. ~ 130 a.a) partial recombinant protein with GST tag. MW of the GST tag alone is 26 KDa.

Sequence

EVLLHMC SYLDMRALGRLAQVYRWLWHFTNCDLLRRQIAWASLNSGFTRLGTNLMTSVPVKVS
QNWVGCCREGILLKWRC SQMPWMQLEDDALYISQA

Host

Mouse

Reactivity

Human

Isotype

IgG2a Kappa

| | |
|-------------------------|--|
| Quality Control Testing | Antibody Reactive Against Recombinant Protein. |
| Storage Buffer | In 1x PBS, pH 7.4 |
| Storage Instruction | Store at -20°C or lower. Aliquot to avoid repeated freezing and thawing. |

Applications

- Sandwich ELISA (Recombinant protein)

Detection limit for recombinant GST tagged FBXW4P1 is 3 ng/ml as a capture antibody.

[Protocol Download](#)

- ELISA

- Immunofluorescence

Immunofluorescence of monoclonal antibody to FBXW4P1 on HeLa cell . [antibody concentration 15 ug/ml]

Gene Info — FBXW4P1

| | |
|---------------------|--|
| Entrez GeneID | 26226 |
| GeneBank Accession# | AF174606 |
| Protein Accession# | AAF04527 |
| Gene Name | FBXW4P1 |
| Gene Alias | FBW3, FBXW3, SHFM3P1 |
| Gene Description | F-box and WD repeat domain containing 4 pseudogene 1 |
| Gene Ontology | Hyperlink |
| Other Designations | - |