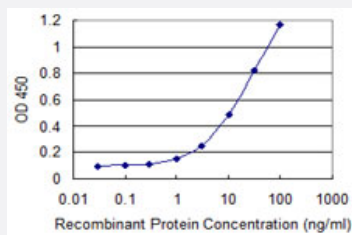


SHFM3P1 monoclonal antibody (M08), clone 3F1

Catalog # H00026226-M08

Size 100 ug

Applications



Sandwich ELISA (Recombinant protein)

Detection limit for recombinant GST tagged FBXW4P1 is 0.3 ng/ml as a capture antibody.

Specification

Product Description	Mouse monoclonal antibody raised against a partial recombinant SHFM3P1.
Immunogen	SHFM3P1 (AAF04527, 31 a.a. ~ 130 a.a) partial recombinant protein with GST tag. MW of the GST tag alone is 26 KDa.
Sequence	EVLLHMC SYLDMRALGRLAQVYRWLWHFTNCDLLRRQIAWASLNSGFTRLGTNLMTSVPVKVS QNWIVGCCREGILLKWRC SQMPWMQLEDDALYSISQA
Host	Mouse
Reactivity	Human
Isotype	IgG2a Kappa
Quality Control Testing	Antibody Reactive Against Recombinant Protein.
Storage Buffer	In 1x PBS, pH 7.4
Storage Instruction	Store at -20°C or lower. Aliquot to avoid repeated freezing and thawing.

Applications

- Sandwich ELISA (Recombinant protein)

Detection limit for recombinant GST tagged FBXW4P1 is 0.3 ng/ml as a capture antibody.

[Protocol Download](#)

- ELISA

Gene Info — FBXW4P1

Entrez GeneID	26226
---------------	-----------------------

GeneBank Accession#	AF174606
---------------------	--------------------------

Protein Accession#	AAF04527
--------------------	--------------------------

Gene Name	FBXW4P1
-----------	---------

Gene Alias	FBW3, FBXW3, SHFM3P1
------------	----------------------

Gene Description	F-box and WD repeat domain containing 4 pseudogene 1
------------------	--

Gene Ontology	Hyperlink
---------------	---------------------------

Other Designations	-
--------------------	---