

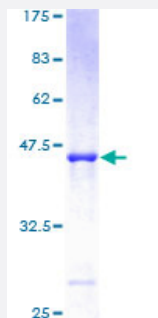
Full-Length

ARL5 (Human) Recombinant Protein (P01)

Catalog # H00026225-P01

Size 25 ug, 10 ug

Applications



Specification

Product Description	Human ARL5 full-length ORF (AAH01254, 1 a.a. - 179 a.a.) recombinant protein with GST-tag at N-terminal.
Sequence	MGILFTRWRLFNHQEHKVIIVGLDNAGKTTILYQFSMNEVVHTSPTIGSNVEEVINNTRFLMWDIGG QESLRSSWNTYYTNTFVVMVVDSTDRERISVTREELYKMLAHEDLRKAGLLIFANKQDVKECMTV AEISQFLKLTSDKDHQWHIQACCAITGEGLCQGLEWMMMSRLKIR
Host	Wheat Germ (in vitro)
Theoretical MW (kDa)	45.43
Interspecies Antigen Sequence	Mouse (98); Rat (99)
Preparation Method	in vitro wheat germ expression system
Purification	Glutathione Sepharose 4 Fast Flow
Quality Control Testing	12.5% SDS-PAGE Stained with Coomassie Blue.
Storage Buffer	50 mM Tris-HCl, 10 mM reduced Glutathione, pH=8.0 in the elution buffer.
Storage Instruction	Store at -80°C. Aliquot to avoid repeated freezing and thawing.

Note

Best use within three months from the date of receipt of this protein.

Applications

- Enzyme-linked Immunoabsorbent Assay
- Western Blot (Recombinant protein)
- Antibody Production
- Protein Array

Gene Info — ARL5A

Entrez GeneID [26225](#)**GeneBank Accession#** [BC001254](#)**Protein Accession#** [AAH01254](#)**Gene Name** ARL5A**Gene Alias** ARFLP5, ARL5**Gene Description** ADP-ribosylation factor-like 5A**Omim ID** [608960](#)**Gene Ontology** [Hyperlink](#)

Gene Summary The protein encoded by this gene belongs to the ARF family of GTP-binding proteins. With its distinctive nuclear/nucleolar localization and interaction with HP1alpha, the protein is developmentally regulated and may play a role(s) in nuclear dynamics and/or signaling cascades during embryonic development. Alternative splicing results in multiple transcript variants encoding different isoforms . This gene has multiple pseudogenes. [provided by RefSeq]

Other Designations ADP-ribosylation factor-like 5|ADP-ribosylation factor-like protein 5