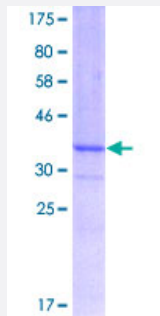


FBXL3 (Human) Recombinant Protein (Q01)

Catalog # H00026224-Q01

Size 25 ug, 10 ug

Applications



Specification

Product Description	Human FBXL3 partial ORF (NP_036290, 1 a.a. - 100 a.a.) recombinant protein with GST-tag at N-terminal.
Sequence	MKRGGRDSDRNSSEEGTAEKSKKLRTTNEHSQTCDWGNLLQDIILQVFKYLPLLDRAHASQVCR NWNQVFHMPDLWRCFEFELNQPATSYLKATHPELIK
Host	Wheat Germ (in vitro)
Theoretical MW (kDa)	36.74
Interspecies Antigen Sequence	Mouse (97); Rat (97)
Preparation Method	in vitro wheat germ expression system
Purification	Glutathione Sepharose 4 Fast Flow
Quality Control Testing	12.5% SDS-PAGE Stained with Coomassie Blue.
Storage Buffer	50 mM Tris-HCl, 10 mM reduced Glutathione, pH=8.0 in the elution buffer.
Storage Instruction	Store at -80°C. Aliquot to avoid repeated freezing and thawing.
Note	Best use within three months from the date of receipt of this protein.

Applications

- Enzyme-linked Immunoabsorbent Assay
- Western Blot (Recombinant protein)
- Antibody Production
- Protein Array

Gene Info — FBXL3

Entrez GeneID [26224](#)

GeneBank Accession# [NM_012158](#)

Protein Accession# [NP_036290](#)

Gene Name FBXL3

Gene Alias FBL3, FBL3A, FBXL3A

Gene Description F-box and leucine-rich repeat protein 3

Omim ID [605653](#)

Gene Ontology [Hyperlink](#)

Gene Summary This gene encodes a member of the F-box protein family which is characterized by an approximately 40 amino acid motif, the F-box. The F-box proteins constitute one of the four subunits of ubiquitin protein ligase complex called SCFs (SKP1-cullin-F-box), which function in phosphorylation-dependent ubiquitination. The F-box proteins are divided into 3 classes: Fbws containing WD-40 domains, Fbls containing leucine-rich repeats, and Fbxs containing either different protein-protein interaction modules or no recognizable motifs. The protein encoded by this gene belongs to the Fbls class and, in addition to an F-box, contains several tandem leucine-rich repeats and is localized in the nucleus. [provided by RefSeq]

Other Designations F-box and leucine-rich repeat protein 3A|F-box protein Fbl3a|OTTHUMP00000018519