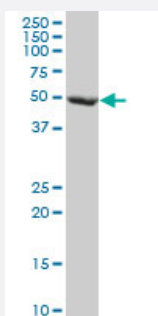


FBXL3 monoclonal antibody (M03), clone 1A3

Catalog # H00026224-M03

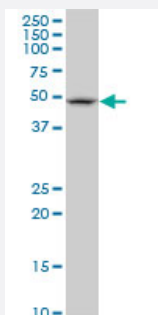
Size 100 ug

Applications



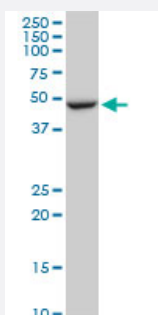
Western Blot (Cell lysate)

FBXL3 monoclonal antibody (M03), clone 1A3. Western Blot analysis of FBXL3 expression in HeLa (Cat # L013V1).



Western Blot (Cell lysate)

FBXL3 monoclonal antibody (M03), clone 1A3. Western Blot analysis of FBXL3 expression in Raw 264.7(Cat # L024V1).

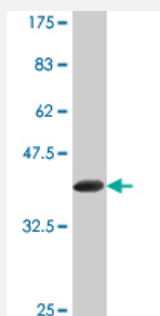
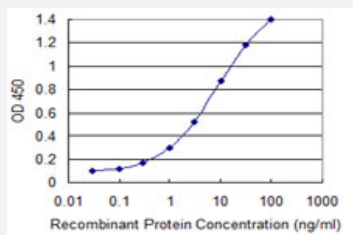


Western Blot (Cell lysate)

FBXL3 monoclonal antibody (M03), clone 1A3. Western Blot analysis of FBXL3 expression in PC-12(Cat # L012V1).

Sandwich ELISA (Recombinant protein)

Detection limit for recombinant GST tagged FBXL3 is 0.1 ng/ml as a capture antibody.



Western Blot detection against Immunogen (36.74 KDa) .

Specification

Product Description	Mouse monoclonal antibody raised against a partial recombinant FBXL3.
Immunogen	FBXL3 (NP_036290, 1 a.a. ~ 100 a.a) partial recombinant protein with GST tag. MW of the GST tag alone is 26 KDa.
Sequence	MKRGGRDSDRNSSEEGTAEKSKKLRTTNEHSQTCDWGNLLQDIIILQVFKYLPLLDRAHASQVCR NWNQVFHMPDLWRCFEFELNQPATSYLKATHPELIK
Host	Mouse
Reactivity	Human, Mouse, Rat
Interspecies Antigen Sequence	Mouse (97); Rat (97)
Isotype	IgG2a Kappa
Quality Control Testing	Antibody Reactive Against Recombinant Protein. Western Blot detection against Immunogen (36.74 KDa) .
Storage Buffer	In 1x PBS, pH 7.4
Storage Instruction	Store at -20°C or lower. Aliquot to avoid repeated freezing and thawing.

Applications

- Western Blot (Cell lysate)

FBXL3 monoclonal antibody (M03), clone 1A3. Western Blot analysis of FBXL3 expression in HeLa (Cat # L013V1).

[Protocol Download](#)

- Western Blot (Cell lysate)

FBXL3 monoclonal antibody (M03), clone 1A3. Western Blot analysis of FBXL3 expression in Raw 264.7(Cat # L024V1).

[Protocol Download](#)

- Western Blot (Cell lysate)

FBXL3 monoclonal antibody (M03), clone 1A3. Western Blot analysis of FBXL3 expression in PC-12(Cat # L012V1).

[Protocol Download](#)

- Western Blot (Recombinant protein)

[Protocol Download](#)

- Sandwich ELISA (Recombinant protein)

Detection limit for recombinant GST tagged FBXL3 is 0.1 ng/ml as a capture antibody.

[Protocol Download](#)

- ELISA

Gene Info — FBXL3

Entrez GeneID	26224
---------------	-----------------------

GeneBank Accession#	NM_012158
---------------------	---------------------------

Protein Accession#	NP_036290
--------------------	---------------------------

Gene Name	FBXL3
-----------	-------

Gene Alias	FBL3, FBL3A, FBXL3A
------------	---------------------

Gene Description	F-box and leucine-rich repeat protein 3
------------------	---

Omim ID	605653
---------	------------------------

Gene Ontology[Hyperlink](#)**Gene Summary**

This gene encodes a member of the F-box protein family which is characterized by an approximately 40 amino acid motif, the F-box. The F-box proteins constitute one of the four subunits of ubiquitin protein ligase complex called SCFs (SKP1-cullin-F-box), which function in phosphorylation-dependent ubiquitination. The F-box proteins are divided into 3 classes: Fbws containing WD-40 domains, Fbls containing leucine-rich repeats, and Fbxs containing either different protein-protein interaction modules or no recognizable motifs. The protein encoded by this gene belongs to the Fbls class and, in addition to an F-box, contains several tandem leucine-rich repeats and is localized in the nucleus. [provided by RefSeq]

Other Designations

F-box and leucine-rich repeat protein 3A|F-box protein Fbl3a|OTTHUMP00000018519