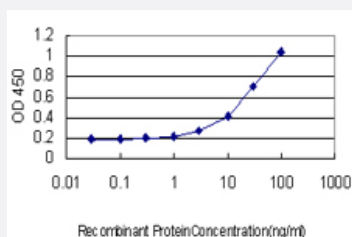


FBXL3 monoclonal antibody (M01), clone 3C4

Catalog # H00026224-M01

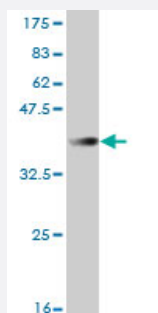
Size 100 ug

Applications



Sandwich ELISA (Recombinant protein)

Detection limit for recombinant GST tagged FBXL3 is approximately 1ng/ml as a capture antibody.



Western Blot detection against Immunogen (36.74 KDa) .

Specification

Product Description

Mouse monoclonal antibody raised against a partial recombinant FBXL3.

Immunogen

FBXL3 (NP_036290, 1 a.a. ~ 100 a.a) partial recombinant protein with GST tag. MW of the GST tag alone is 26 KDa.

Sequence

MKRGGRDSDRNSSEEGTAEKSKKLRTTNEHSQTCDWGNLLQDIILQVFKYLPLLDRAHASQVCR
NWNQVFHMPDLWRCFEFELNQPATSYLKATHPELIK

Host

Mouse

Reactivity

Human

Interspecies Antigen Sequence	Mouse (97); Rat (97)
Isotype	IgG2a Kappa
Quality Control Testing	Antibody Reactive Against Recombinant Protein. Western Blot detection against Immunogen (36.74 KDa) .
Storage Buffer	In 1x PBS, pH 7.4
Storage Instruction	Store at -20°C or lower. Aliquot to avoid repeated freezing and thawing.

Applications

- Western Blot (Recombinant protein)

[Protocol Download](#)

- Sandwich ELISA (Recombinant protein)

Detection limit for recombinant GST tagged FBXL3 is approximately 1ng/ml as a capture antibody.

[Protocol Download](#)

- ELISA

Gene Info — FBXL3

Entrez GeneID	26224
GeneBank Accession#	NM_012158
Protein Accession#	NP_036290
Gene Name	FBXL3
Gene Alias	FBL3, FBL3A, FBXL3A
Gene Description	F-box and leucine-rich repeat protein 3
Omim ID	605653
Gene Ontology	Hyperlink

Gene Summary

This gene encodes a member of the F-box protein family which is characterized by an approximately 40 amino acid motif, the F-box. The F-box proteins constitute one of the four subunits of ubiquitin protein ligase complex called SCFs (SKP1-cullin-F-box), which function in phosphorylation-dependent ubiquitination. The F-box proteins are divided into 3 classes: Fbws containing WD-40 domains, Fbls containing leucine-rich repeats, and Fbxs containing either different protein-protein interaction modules or no recognizable motifs. The protein encoded by this gene belongs to the Fbls class and, in addition to an F-box, contains several tandem leucine-rich repeats and is localized in the nucleus. [provided by RefSeq]

Other Designations

F-box and leucine-rich repeat protein 3A|F-box protein Fbl3a|OTTHUMP00000018519