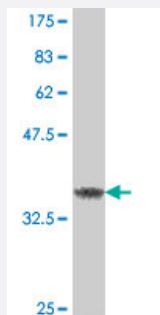


FBXL3 polyclonal antibody (A01)

Catalog # H00026224-A01

Size 50 uL

Applications



Western Blot detection against Immunogen (37.11 KDa) .

Specification

Product Description	Mouse polyclonal antibody raised against a partial recombinant FBXL3.
Immunogen	FBXL3 (NP_036290, 1 a.a. ~ 100 a.a) partial recombinant protein with GST tag.
Sequence	MKRGGRDSDRNSSEEGTAEKSKKLRTTNEHSQTCDWGNLLQDILQVFKYLPLLDRAHASQVCR NWNQVFHMPDLWRCFEFELNQPATSYLKATHPELIK
Host	Mouse
Reactivity	Human
Interspecies Antigen Sequence	Mouse (97); Rat (97)
Quality Control Testing	Antibody Reactive Against Recombinant Protein. Western Blot detection against Immunogen (37.11 KDa) .
Storage Buffer	50 % glycerol
Storage Instruction	Store at -20°C or lower. Aliquot to avoid repeated freezing and thawing.

Applications

- Western Blot (Recombinant protein)

[Protocol Download](#)

- ELISA

Gene Info — FBXL3

Entrez GeneID [26224](#)

GeneBank Accession# [NM_012158](#)

Protein Accession# [NP_036290](#)

Gene Name FBXL3

Gene Alias FBL3, FBL3A, FBXL3A

Gene Description F-box and leucine-rich repeat protein 3

Omim ID [605653](#)

Gene Ontology [Hyperlink](#)

Gene Summary This gene encodes a member of the F-box protein family which is characterized by an approximately 40 amino acid motif, the F-box. The F-box proteins constitute one of the four subunits of ubiquitin protein ligase complex called SCFs (SKP1-cullin-F-box), which function in phosphorylation-dependent ubiquitination. The F-box proteins are divided into 3 classes: Fbws containing WD-40 domains, Fbls containing leucine-rich repeats, and Fbxs containing either different protein-protein interaction modules or no recognizable motifs. The protein encoded by this gene belongs to the Fbls class and, in addition to an F-box, contains several tandem leucine-rich repeats and is localized in the nucleus. [provided by RefSeq]

Other Designations F-box and leucine-rich repeat protein 3A|F-box protein Fbl3a|OTTHUMP00000018519