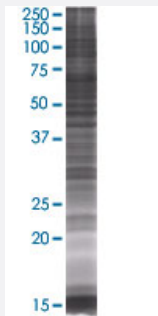


SPAG8 293T Cell Transient Overexpression Lysate(Denatured)

Catalog # H00026206-T01

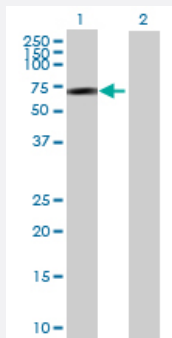
Size 100 uL

Applications



SDS-PAGE Gel

SPAG8 transfected lysate.



Western Blot

Lane 1: SPAG8 transfected lysate (55.22 KDa)

Lane 2: Non-transfected lysate.

Specification

Transfected Cell Line 293T

Plasmid pCMV-SPAG8 full-length

Host Human

Theoretical MW (kDa) 55.22

Quality Control Testing Transient overexpression cell lysate was tested with Anti-SPAG8 antibody ([H00026206-B01](#)) by Western Blots.
SDS-PAGE Gel
SPAG8 transfected lysate.
Western Blot
Lane 1: SPAG8 transfected lysate (55.22 KDa)
Lane 2: Non-transfected lysate.

Storage Buffer	1X Sample Buffer (50 mM Tris-HCl, 2% SDS, 10% glycerol, 300 mM 2-mercaptoethanol, 0.01% Bromophenol blue)
Storage Instruction	Store at -80°C. Aliquot to avoid repeated freezing and thawing.

Applications

- Western Blot

Gene Info — SPAG8

Entrez GeneID	26206
GeneBank Accession#	BC019247.1
Protein Accession#	AAH19247.1
Gene Name	SPAG8
Gene Alias	BS-84, HSD-1, MGC26201, SMP1, SPAG3, hSMP-1
Gene Description	sperm associated antigen 8
Omim ID	605731
Gene Ontology	Hyperlink
Gene Summary	<p>The correlation of anti-sperm antibodies with cases of unexplained infertility implicates a role for these antibodies in blocking fertilization. Improved diagnosis and treatment of immunologic infertility, as well as identification of proteins for targeted contraception, are dependent on the identification and characterization of relevant sperm antigens. The protein encoded by this gene is recognized by sperm agglutinating antibodies from an infertile woman. This protein is localized in germ cells of the testis at all stages of spermatogenesis and is localized to the acrosomal region of mature spermatozoa. Alternatively spliced variants that encode different protein isoforms have been described but the full-length sequences of only two have been determined. [provided by RefSeq]</p>
Other Designations	OTTHUMP00000021352 sperm membrane protein 1