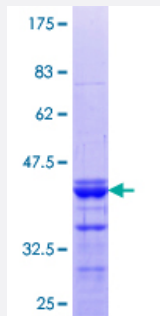


SPAG8 (Human) Recombinant Protein (Q01)

Catalog # H00026206-Q01

Size 25 ug, 10 ug

Applications



Specification

Product Description	Human SPAG8 partial ORF (NP_036568.1, 321 a.a. - 421 a.a.) recombinant protein with GST-tag at N-terminal.
Sequence	LKSPMPSSTTQKDSYQPPGNVYWPLRGKREAMLEMLLQHQCICKEVQAEQEPTRKLFEVESVTHH DYRMELAQAGTPAPTKPHDYRQEQPETFWIQRAPQLP
Host	Wheat Germ (in vitro)
Theoretical MW (kDa)	36.85
Preparation Method	in vitro wheat germ expression system
Purification	Glutathione Sepharose 4 Fast Flow
Quality Control Testing	12.5% SDS-PAGE Stained with Coomassie Blue.
Storage Buffer	50 mM Tris-HCl, 10 mM reduced Glutathione, pH=8.0 in the elution buffer.
Storage Instruction	Store at -80°C. Aliquot to avoid repeated freezing and thawing.
Note	Best use within three months from the date of receipt of this protein.

Applications

- Enzyme-linked Immunoabsorbent Assay
- Western Blot (Recombinant protein)
- Antibody Production
- Protein Array

Gene Info — SPAG8

Entrez GeneID [26206](#)

GeneBank Accession# [NM_012436](#)

Protein Accession# [NP_036568.1](#)

Gene Name SPAG8

Gene Alias BS-84, HSD-1, MGC26201, SMP1, SPAG3, hSMP-1

Gene Description sperm associated antigen 8

Omim ID [605731](#)

Gene Ontology [Hyperlink](#)

Gene Summary The correlation of anti-sperm antibodies with cases of unexplained infertility implicates a role for these antibodies in blocking fertilization. Improved diagnosis and treatment of immunologic infertility, as well as identification of proteins for targeted contraception, are dependent on the identification and characterization of relevant sperm antigens. The protein encoded by this gene is recognized by sperm agglutinating antibodies from an infertile woman. This protein is localized in germ cells of the testis at all stages of spermatogenesis and is localized to the acrosomal region of mature spermatozoa. Alternatively spliced variants that encode different protein isoforms have been described but the full-length sequences of only two have been determined. [provided by RefSeq]

Other Designations OTTHUMP00000021352|sperm membrane protein 1