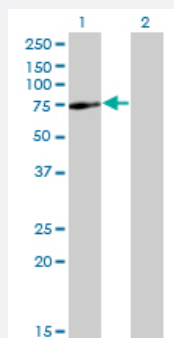


SPAG8 monoclonal antibody (M01), clone 2F12

Catalog # H00026206-M01

Size 100 ug

Applications

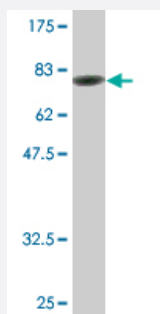


Western Blot (Transfected lysate)

Western Blot analysis of SPAG8 expression in transfected 293T cell line by SPAG8 monoclonal antibody (M01), clone 2F12.

Lane 1: SPAG8 transfected lysate(53.5 KDa).

Lane 2: Non-transfected lysate.



Western Blot detection against Immunogen (80.85 KDa) .

Specification

Product Description

Mouse monoclonal antibody raised against a full-length recombinant SPAG8.

Immunogen

SPAG8 (AAH19247, 1 a.a. ~ 501 a.a) full-length recombinant protein with GST tag. MW of the GST tag alone is 26 KDa.

Sequence

METNGSTEGSRSRSLDIQPSSEGLGPTSEFPSSDDSPRSALAAATAAAAAASAAAAATAAF
TTAKAAALSTKTPAPCSEFMEPSSDPSLLGEPCAGPGFTHNIAHGSLGFEPVYVSCIAQDTCTTT
DHSSNPGPVPGSSSGPVLGSSSGAGHGSGSGSGPGCGSVPGSGSGPGPGSGPGSGPGHGS
GSHPGPASGPGPDTGPDSELSPIPPGFRNLVADRVLNYSWSQHCPWEPQKQPPWEFLQVL
EPGARGLWKPPDIKGKLMVCYETLPRGQCLLYNWEERATNHLDQVPSMQDGSESEFFFRHGHR
GLLTMQLKSPMPSTTQKDSYQPPGNVYWPLRGKREAMLEMLLQHQICKEVQAEQEPTKLFV
ESVTHHDYRMELAQAGTPAPTKPHDYRQEPETFWIQRAPQLPTWWPLPTQVPAEDYLTWKE
WGFTGVQEVLSALLRATPGEYSVNICGMNEHPVCSTWNTNRLCHQEMGSKKTVTQEDRGW

Host	Mouse
Reactivity	Human
Isotype	IgG2a Kappa
Quality Control Testing	Antibody Reactive Against Recombinant Protein. Western Blot detection against Immunogen (80.85 KDa) .
Storage Buffer	In 1x PBS, pH 7.4
Storage Instruction	Store at -20°C or lower. Aliquot to avoid repeated freezing and thawing.

Applications

- Western Blot (Transfected lysate)

Western Blot analysis of SPAG8 expression in transfected 293T cell line by SPAG8 monoclonal antibody (M01), clone 2F12.

Lane 1: SPAG8 transfected lysate(53.5 KDa).

Lane 2: Non-transfected lysate.

[Protocol Download](#)

- Western Blot (Recombinant protein)

[Protocol Download](#)

- ELISA

Gene Info — SPAG8

Entrez GeneID	26206
GeneBank Accession#	BC019247
Protein Accession#	AAH19247
Gene Name	SPAG8
Gene Alias	BS-84, HSD-1, MGC26201, SMP1, SPAG3, hSMP-1
Gene Description	sperm associated antigen 8
Omim ID	605731

Gene Ontology[Hyperlink](#)**Gene Summary**

The correlation of anti-sperm antibodies with cases of unexplained infertility implicates a role for these antibodies in blocking fertilization. Improved diagnosis and treatment of immunologic infertility, as well as identification of proteins for targeted contraception, are dependent on the identification and characterization of relevant sperm antigens. The protein encoded by this gene is recognized by sperm agglutinating antibodies from an infertile woman. This protein is localized in germ cells of the testis at all stages of spermatogenesis and is localized to the acrosomal region of mature spermatozoa. Alternatively spliced variants that encode different protein isoforms have been described but the full-length sequences of only two have been determined. [provided by RefSeq]

Other Designations

OTTHUMP00000021352|sperm membrane protein 1