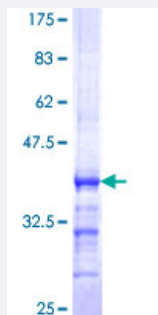


PCDHB5 (Human) Recombinant Protein (Q01)

Catalog # H00026167-Q01

Size 25 ug, 10 ug

Applications



Specification

Product Description	Human PCDHB5 partial ORF (NP_056484, 261 a.a. - 357 a.a.) recombinant protein with GST-tag at N-terminal.
Sequence	VVVVSARDLDAGAYGSVAYALFQGDEVTQPFVIDEKTAEIRLKRALDPEATPYYNVEIVATDGGGLSGKCTVAIEVVDVNDNAPELTMSTLSSPTPE
Host	Wheat Germ (in vitro)
Theoretical MW (kDa)	36.41
Interspecies Antigen Sequence	Mouse (76); Rat (72)
Preparation Method	in vitro wheat germ expression system
Purification	Glutathione Sepharose 4 Fast Flow
Quality Control Testing	12.5% SDS-PAGE Stained with Coomassie Blue.
Storage Buffer	50 mM Tris-HCl, 10 mM reduced Glutathione, pH=8.0 in the elution buffer.
Storage Instruction	Store at -80°C. Aliquot to avoid repeated freezing and thawing.
Note	Best use within three months from the date of receipt of this protein.

Applications

- Enzyme-linked Immunoabsorbent Assay
- Western Blot (Recombinant protein)
- Antibody Production
- Protein Array

Gene Info — PCDHB5

Entrez GeneID [26167](#)

GeneBank Accession# [NM_015669](#)

Protein Accession# [NP_056484](#)

Gene Name PCDHB5

Gene Alias DKFZp586B0217, PCDH-BETA5

Gene Description protocadherin beta 5

Omim ID [606331](#)

Gene Ontology [Hyperlink](#)

Gene Summary

This gene is a member of the protocadherin beta gene cluster, one of three related gene clusters tandemly linked on chromosome five. The gene clusters demonstrate an unusual genomic organization similar to that of B-cell and T-cell receptor gene clusters. The beta cluster contains 16 genes and 3 pseudogenes, each encoding 6 extracellular cadherin domains and a cytoplasmic tail that deviates from others in the cadherin superfamily. The extracellular domains interact in a homophilic manner to specify differential cell-cell connections. Unlike the alpha and gamma clusters, the transcripts from these genes are made up of only one large exon, not sharing common 3' exons as expected. These neural cadherin-like cell adhesion proteins are integral plasma membrane proteins. Their specific functions are unknown but they most likely play a critical role in the establishment and function of specific cell-cell neural connections. [provided by RefSeq]

Other Designations -