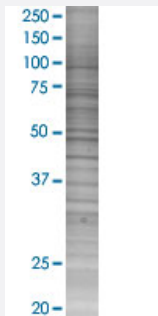


GIMAP2 293T Cell Transient Overexpression Lysate(Denatured)

Catalog # H00026157-T02

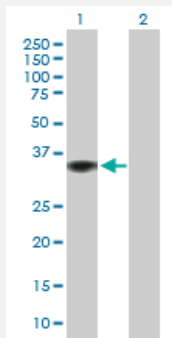
Size 100 uL

Applications



SDS-PAGE Gel

GIMAP2 transfected lysate.



Western Blot

Lane 1: GIMAP2 transfected lysate (38.00 KDa)

Lane 2: Non-transfected lysate.

Specification

Transfected Cell Line 293T

Plasmid pCMV-GIMAP2 full-length

Host Human

Theoretical MW (kDa) 38

Quality Control Testing Transient overexpression cell lysate was tested with Anti-GIMAP2 antibody ([H00026157-B01P](#)) by Western Blots.
 SDS-PAGE Gel
 GIMAP2 transfected lysate.
 Western Blot
 Lane 1: GIMAP2 transfected lysate (38.00 KDa)
 Lane 2: Non-transfected lysate.

Storage Buffer

1X Sample Buffer (50 mM Tris-HCl, 2% SDS, 10% glycerol, 300 mM 2-mercaptoethanol, 0.01% Bromophenol blue)

Storage Instruction

Store at -80°C. Aliquot to avoid repeated freezing and thawing.

Applications

- Western Blot

Gene Info — GIMAP2

Entrez GeneID[26157](#)**GeneBank Accession#**[NM_015660](#)**Protein Accession#**[NP_056475.1](#)**Gene Name**

GIMAP2

Gene Alias

DKFZp586D0824, HIMAP2, IMAP2, MGC24275

Gene Description

GTPase, IMAP family member 2

Omim ID[608085](#)**Gene Ontology**[Hyperlink](#)**Gene Summary**

This gene encodes a protein belonging to the GTP-binding superfamily and to the immuno-associated nucleotide (IAN) subfamily of nucleotide-binding proteins. In humans, the IAN subfamily genes are located in a cluster at 7q36.1. [provided by RefSeq]

Other Designations

immunity associated protein 2