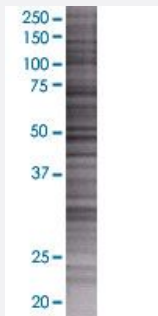


# GIMAP2 293T Cell Transient Overexpression Lysate(Denatured)

Catalog # H00026157-T01

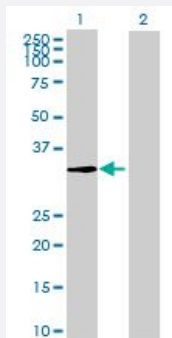
Size 100 uL

## Applications



### SDS-PAGE Gel

GIMAP2 transfected lysate.



### Western Blot

Lane 1: GIMAP2 transfected lysate ( 38 KDa)

Lane 2: Non-transfected lysate.

## Specification

**Transfected Cell Line** 293T

**Plasmid** pCMV-GIMAP2 full-length

**Host** Human

**Theoretical MW (kDa)** 38

### Quality Control Testing

Transient overexpression cell lysate was tested with Anti-GIMAP2 antibody ([H00026157-B01](#)) by Western Blots.

SDS-PAGE Gel

GIMAP2 transfected lysate.

Western Blot

Lane 1: GIMAP2 transfected lysate ( 38 KDa)

Lane 2: Non-transfected lysate.

|                            |   |
|----------------------------|---|
| <b>Storage Buffer</b>      | 1X Sample Buffer (50 mM Tris-HCl, 2% SDS, 10% glycerol, 300 mM 2-mercaptoethanol, 0.01% Bromophenol blue) |
| <b>Storage Instruction</b> | Store at -80°C. Aliquot to avoid repeated freezing and thawing.   |

## Applications

- Western Blot

## Gene Info — GIMAP2

|                            |  |
|----------------------------|--|
| <b>Entrez GeneID</b>       | <a href="#">26157</a>  |
| <b>GeneBank Accession#</b> | <a href="#">NM_015660</a>  |
| <b>Protein Accession#</b>  | <a href="#">NP_056475</a>  |
| <b>Gene Name</b>           | GIMAP2   |
| <b>Gene Alias</b>          | DKFZp586D0824, HIMAP2, IMAP2, MGC24275   |
| <b>Gene Description</b>    | GTPase, IMAP family member 2   |
| <b>Omim ID</b>             | <a href="#">608085</a>   |
| <b>Gene Ontology</b>       | <a href="#">Hyperlink</a>  |
| <b>Gene Summary</b>        | This gene encodes a protein belonging to the GTP-binding superfamily and to the immuno-associated nucleotide (IAN) subfamily of nucleotide-binding proteins. In humans, the IAN subfamily genes are located in a cluster at 7q36.1. [provided by RefSeq] |
| <b>Other Designations</b>  | immunity associated protein 2  |