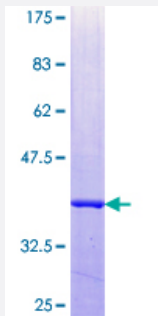


# GIMAP2 (Human) Recombinant Protein (Q01)

Catalog # H00026157-Q01

Size 25 ug, 10 ug

## Applications



## Specification

<b>Product Description</b>	Human GIMAP2 partial ORF ( NP_056475.1, 1 a.a. - 100 a.a.) recombinant protein with GST-tag at N-terminal.
<b>Sequence</b>	MDQNEHSHWGPHAKGQCASRSELRIILVGKTGTGKSAAGNSILRKQAFESKLGSQTLTKTCSKSQ GSWGNREIVIDTPDMFSWKDHCEALYKEVQRCYL
<b>Host</b>	Wheat Germ (in vitro)
<b>Theoretical MW (kDa)</b>	36.74
<b>Preparation Method</b>	<a href="#">in vitro wheat germ expression system</a>
<b>Purification</b>	Glutathione Sepharose 4 Fast Flow
<b>Quality Control Testing</b>	12.5% SDS-PAGE Stained with Coomassie Blue.
<b>Storage Buffer</b>	50 mM Tris-HCl, 10 mM reduced Glutathione, pH=8.0 in the elution buffer.
<b>Storage Instruction</b>	Store at -80°C. Aliquot to avoid repeated freezing and thawing.
<b>Note</b>	Best use within three months from the date of receipt of this protein.

## Applications

- Enzyme-linked Immunoabsorbent Assay
- Western Blot (Recombinant protein)
- Antibody Production
- Protein Array

## Gene Info — GIMAP2

**Entrez GeneID** [26157](#)

**GeneBank Accession#** [NM\\_015660](#)

**Protein Accession#** [NP\\_056475.1](#)

**Gene Name** GIMAP2

**Gene Alias** DKFZp586D0824, HIMAP2, IMAP2, MGC24275

**Gene Description** GTPase, IMAP family member 2

**Omim ID** [608085](#)

**Gene Ontology** [Hyperlink](#)

**Gene Summary** This gene encodes a protein belonging to the GTP-binding superfamily and to the immuno-associated nucleotide (IAN) subfamily of nucleotide-binding proteins. In humans, the IAN subfamily genes are located in a cluster at 7q36.1. [provided by RefSeq]

**Other Designations** immunity associated protein 2