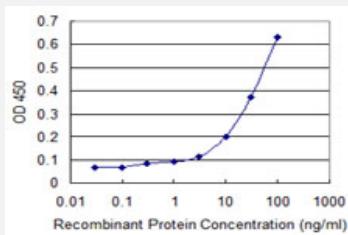


GIMAP2 monoclonal antibody (M01), clone 1E10

Catalog # H00026157-M01

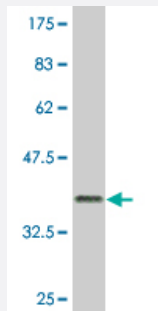
Size 100 ug

Applications



Sandwich ELISA (Recombinant protein)

Detection limit for recombinant GST tagged GIMAP2 is 1 ng/ml as a capture antibody.



Western Blot detection against Immunogen (36.74 KDa) .

Specification

Product Description	Mouse monoclonal antibody raised against a partial recombinant GIMAP2.
Immunogen	GIMAP2 (NP_056475.1, 1 a.a. ~ 100 a.a) partial recombinant protein with GST tag. MW of the GST tag alone is 26 KDa.
Sequence	MDQNEHSHWGPHAKGQCASRSELRIILVGKTGTGKSAAGNSILRKQAFESKLGSQTLTKTCSKSQGSWGNREIIVDTPDMFSWKDHCEALYKEVQRCYL
Host	Mouse
Reactivity	Human
Isotype	IgG2a Kappa

Quality Control Testing

Antibody Reactive Against Recombinant Protein.
Western Blot detection against Immunogen (36.74 KDa) .

Storage Buffer

In 1x PBS, pH 7.4

Storage Instruction

Store at -20°C or lower. Aliquot to avoid repeated freezing and thawing.

Applications

- Western Blot (Recombinant protein)

[Protocol Download](#)

- Sandwich ELISA (Recombinant protein)

Detection limit for recombinant GST tagged GIMAP2 is 1 ng/ml as a capture antibody.

[Protocol Download](#)

- ELISA

Gene Info — GIMAP2

Entrez GeneID

[26157](#)

GeneBank Accession#

[NM_015660](#)

Protein Accession#

[NP_056475.1](#)

Gene Name

GIMAP2

Gene Alias

DKFZp586D0824, HIMAP2, IMAP2, MGC24275

Gene Description

GTPase, IMAP family member 2

Omim ID

[608085](#)

Gene Ontology

[Hyperlink](#)

Gene Summary

This gene encodes a protein belonging to the GTP-binding superfamily and to the immuno-associated nucleotide (IAN) subfamily of nucleotide-binding proteins. In humans, the IAN subfamily genes are located in a cluster at 7q36.1. [provided by RefSeq]

Other Designations

immunity associated protein 2