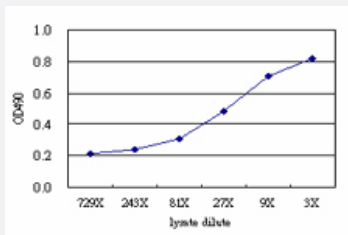


KIF26A (Human) Matched Antibody Pair

Catalog # H00026153-AP51

Size 1 Set

Applications



Sandwich ELISA detection sensitivity ranging from approximately 81x to 3x dilution of the KIF26A 293T overexpression lysate (non-denatured).

Specification

Product Description	This antibody pair set comes with a matched antibody pair to detect and quantify the protein level of human KIF26A.
Reactivity	Human
Interspecies Antigen Sequence	Mouse (84); Rat (87)
Quality Control Testing	Standard curve using KIF26A 293T overexpression lysate (non-denatured) as an analyte. Sandwich ELISA detection sensitivity ranging from approximately 81x to 3x dilution of the KIF26A 293T overexpression lysate (non-denatured).
Supplied Product	Antibody pair set content: 1. Capture antibody: mouse monoclonal anti-KIF26A (100 ug) 2. Detection antibody: rabbit purified polyclonal anti-KIF26A (50 ug) *Reagents are sufficient for at least 3-5 x 96 well plates using recommended protocols.
Storage Instruction	Store reagents of the antibody pair set at -20°C or lower. Please aliquot to avoid repeated freeze thaw cycle. Reagents should be returned to -20°C storage immediately after use.

Applications

- ELISA Pair (Transfected lysate)

[Protocol Download](#)

Gene Info — KIF26A

Entrez GeneID	26153
---------------	-----------------------

Gene Name	KIF26A
-----------	--------

Gene Alias	DKFZp434N178, FLJ22753, KIAA1236
------------	----------------------------------

Gene Description	kinesin family member 26A
------------------	---------------------------

Gene Ontology	Hyperlink
---------------	---------------------------

Other Designations	KIF26A variant protein
--------------------	------------------------