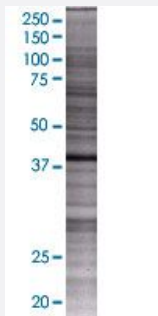


WSB1 293T Cell Transient Overexpression Lysate(Denatured)

Catalog # H00026118-T01

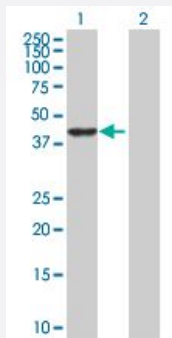
Size 100 uL

Applications



SDS-PAGE Gel

WSB1 transfected lysate.



Western Blot

Lane 1: WSB1 transfected lysate (47.4 KDa)

Lane 2: Non-transfected lysate.

Specification

Transfected Cell Line	293T
Plasmid	pCMV-WSB1 full-length
Host	Human
Theoretical MW (kDa)	47.4
Interspecies Antigen Sequence	Mouse (92); Rat (93)

Quality Control Testing

Transient overexpression cell lysate was tested with Anti-WSB1 antibody ([H00026118-B01](#)) by Western Blots.
SDS-PAGE Gel
WSB1 transfected lysate.
Western Blot
Lane 1: WSB1 transfected lysate (47.4 KDa)
Lane 2: Non-transfected lysate.

Storage Buffer

1X Sample Buffer (50 mM Tris-HCl, 2% SDS, 10% glycerol, 300 mM 2-mercaptoethanol, 0.01% Bromophenol blue)

Storage Instruction

Store at -80°C. Aliquot to avoid repeated freezing and thawing.

Applications

- Western Blot

Gene Info — WSB1

Entrez GeneID[26118](#)**GeneBank Accession#**[NM_015626](#)**Protein Accession#**[NP_056441.6](#)**Gene Name**

WSB1

Gene Alias

SWIP1, WSB-1

Gene Description

WD repeat and SOCS box-containing 1

Omim ID[610091](#)**Gene Ontology**[Hyperlink](#)**Gene Summary**

This gene encodes a member of the WD-protein subfamily. This protein shares a high sequence identity to mouse and chick proteins. It contains several WD-repeats spanning most of the protein and an SOCS box in the C-terminus. Alternatively spliced transcript variants encoding distinct isoforms have been found for this gene. [provided by RefSeq]

Other Designations

SOCS box-containing WD protein SWiP-1

Disease

- [Cleft Lip](#)
- [Cleft Palate](#)
- [Tooth Abnormalities](#)