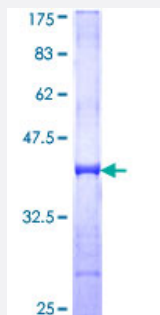


WSB1 (Human) Recombinant Protein (Q01)

Catalog # H00026118-Q01

Size 25 ug, 10 ug

Applications



Specification

Product Description	Human WSB1 partial ORF (NP_056441, 101 a.a. - 200 a.a.) recombinant protein with GST-tag at N-terminal.
Sequence	EHIIDCGDIVWSLAFGSSVPEKQSRCVNEWHRFRFGQDQQLLATGLNNGRIKWDVYTGKLLLNLV DHTEVVRDLTFAPDGSLILVSASRDKTLRVWDL
Host	Wheat Germ (in vitro)
Theoretical MW (kDa)	36.74
Interspecies Antigen Sequence	Mouse (92); Rat (93)
Preparation Method	in vitro wheat germ expression system
Purification	Glutathione Sepharose 4 Fast Flow
Quality Control Testing	12.5% SDS-PAGE Stained with Coomassie Blue.
Storage Buffer	50 mM Tris-HCl, 10 mM reduced Glutathione, pH=8.0 in the elution buffer.
Storage Instruction	Store at -80°C. Aliquot to avoid repeated freezing and thawing.
Note	Best use within three months from the date of receipt of this protein.

Applications

- Enzyme-linked Immunoabsorbent Assay
- Western Blot (Recombinant protein)
- Antibody Production
- Protein Array

Gene Info — WSB1

Entrez GeneID [26118](#)

GeneBank Accession# [NM_015626](#)

Protein Accession# [NP_056441](#)

Gene Name WSB1

Gene Alias SWIP1, WSB-1

Gene Description WD repeat and SOCS box-containing 1

Omim ID [610091](#)

Gene Ontology [Hyperlink](#)

Gene Summary This gene encodes a member of the WD-protein subfamily. This protein shares a high sequence identity to mouse and chick proteins. It contains several WD-repeats spanning most of the protein and an SOCS box in the C-terminus. Alternatively spliced transcript variants encoding distinct isoforms have been found for this gene. [provided by RefSeq]

Other Designations SOCS box-containing WD protein SWiP-1

Disease

- [Cleft Lip](#)
- [Cleft Palate](#)
- [Tooth Abnormalities](#)