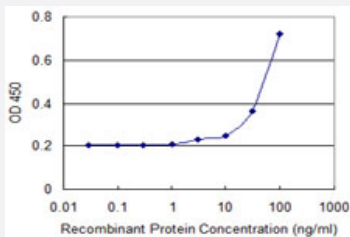


WSB1 monoclonal antibody (M01), clone 3E10

Catalog # H00026118-M01

Size 100 ug

Applications



Sandwich ELISA (Recombinant protein)

Detection limit for recombinant GST tagged WSB1 is 10 ng/ml as a capture antibody.

Specification

Product Description	Mouse monoclonal antibody raised against a partial recombinant WSB1.
Immunogen	WSB1 (AAH21110.1, 53 a.a. ~ 137 a.a) partial recombinant protein with GST tag. MW of the GST tag alone is 26 KDa.
Sequence	QGHRTVKLVPSQCLQNFLHGTKNVTNSSLRLPRQNSDGGQKNKPREHIIDCGDIVWSLAFG SSVPEKQSRCVNIWHRFRFG
Host	Mouse
Reactivity	Human
Interspecies Antigen Sequence	Mouse (92); Rat (93)
Isotype	IgG2a Kappa
Quality Control Testing	Antibody Reactive Against Recombinant Protein.
Storage Buffer	In 1x PBS, pH 7.4
Storage Instruction	Store at -20°C or lower. Aliquot to avoid repeated freezing and thawing.

Applications

- Sandwich ELISA (Recombinant protein)

Detection limit for recombinant GST tagged WSB1 is 10 ng/ml as a capture antibody.

[Protocol Download](#)

- ELISA

Gene Info — WSB1

Entrez GeneID	26118
---------------	-----------------------

GeneBank Accession#	BC021110
---------------------	--------------------------

Protein Accession#	AAH21110.1
--------------------	----------------------------

Gene Name	WSB1
-----------	------

Gene Alias	SWIP1, WSB-1
------------	--------------

Gene Description	WD repeat and SOCS box-containing 1
------------------	-------------------------------------

Omim ID	610091
---------	------------------------

Gene Ontology	Hyperlink
---------------	---------------------------

Gene Summary	This gene encodes a member of the WD-protein subfamily. This protein shares a high sequence identity to mouse and chick proteins. It contains several WD-repeats spanning most of the protein and an SOCS box in the C-terminus. Alternatively spliced transcript variants encoding distinct isoforms have been found for this gene. [provided by RefSeq]
--------------	---

Other Designations	SOCS box-containing WD protein SWiP-1
--------------------	---------------------------------------

Disease

- [Cleft Lip](#)
- [Cleft Palate](#)
- [Tooth Abnormalities](#)