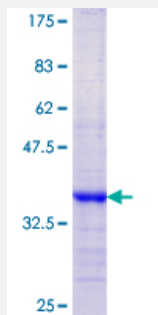


KLK13 (Human) Recombinant Protein (Q01)

Catalog # H00026085-Q01

Size 25 ug, 10 ug

Applications



Specification

Product Description	Human KLK13 partial ORF (NP_056411.1, 179 a.a. - 277 a.a.) recombinant protein with GST-tag at N-terminal.
Sequence	ANIQLRSDEECRQVYPGKITDNMLCAGTKEGGKDSCEGDSGGPLVCNRTL YGMSWGD FPCGQP DRPGVYTRVSR YVLWIRE TIRKYETQQQKWLKGPQ
Host	Wheat Germ (in vitro)
Theoretical MW (kDa)	36.63
Interspecies Antigen Sequence	Mouse (78); Rat (79)
Preparation Method	in vitro wheat germ expression system
Purification	Glutathione Sepharose 4 Fast Flow
Quality Control Testing	12.5% SDS-PAGE Stained with Coomassie Blue.
Storage Buffer	50 mM Tris-HCl, 10 mM reduced Glutathione, pH=8.0 in the elution buffer.
Storage Instruction	Store at -80°C. Aliquot to avoid repeated freezing and thawing.
Note	Best use within three months from the date of receipt of this protein.

Applications

- Enzyme-linked Immunoabsorbent Assay
- Western Blot (Recombinant protein)
- Antibody Production
- Protein Array

Gene Info — KLK13

Entrez GeneID [26085](#)

GeneBank Accession# [NM_015596](#)

Protein Accession# [NP_056411.1](#)

Gene Name KLK13

Gene Alias DKFZp586J1923, KLK-L4, KLKL4

Gene Description kallikrein-related peptidase 13

Omim ID [605505](#)

Gene Ontology [Hyperlink](#)

Gene Summary Kallikreins are a subgroup of serine proteases having diverse physiological functions. Growing evidence suggests that many kallikreins are implicated in carcinogenesis and some have potential as novel cancer and other disease biomarkers. This gene is one of the fifteen kallikrein subfamily members located in a cluster on chromosome 19. Expression of this gene is regulated by steroid hormones and may be useful as a marker for breast cancer. An additional transcript variant has been identified, but its full length sequence has not been determined. [provided by RefSeq]

Other Designations kallikrein 13|kallikrein-like gene 4

Disease

- [Genetic Predisposition to Disease](#)
- [Prostatic Neoplasms](#)